

Report Number **BTC 14017A**

AN ACOUSTIC TEST REPORT COVERING A
LABORATORY SOUND INSULATION TEST TO
BS EN ISO 140-3:1995 ON A BRITISH GYPSUM
GYPWALL QUIET_{SF} PARTITION.

Test Date: 13th July 2005

www.btconline.co.uk

Customer: **Hilti (Gt. Britain) Limited**
1 Trafford Wharf Road
Manchester
M17 1BY

Customer: Hilti (Gt. Britain) Limited

BTC 14017A: Page 1 of 9



0296



AN ACOUSTIC TEST REPORT COVERING A LABORATORY SOUND INSULATION TEST TO BS EN ISO 140-3:1995 ON A BRITISH GYPSUM GYPWALL QUIET_{sf} PARTITION.

TABLE OF CONTENTS

FOREWORD	3
REPORT AUTHORISATION	3
TEST CONSTRUCTION	4
BTC 14017A	4
TEST MATERIALS	5
Gyproc SoundBloc	5
Metal components	5
Insulation	5
Fixings	5
TEST PROCEDURE	6
TEST RESULTS	6
LIMITATIONS	6
APPENDIX A- TEST DATA	7
APPENDIX B - TEST METHOD AND CONDITIONS	9



FOREWORD

This test report details sound insulation tests conducted on a partition system incorporating 70mm 70S50 studs at 600mm centres, RB1 Resilient Bar, clad each side with a double layer of 15mm Gyproc SoundBloc and with a single layer of 50mm Isowool APR within the cavity. The test sponsor was Hilti (Gt. Britain) Limited.

The test specimen was installed by British Gypsum Limited on 11th and 13th July 2005. The Building Test Centre played no role in the design of the test specimen.

REPORT AUTHORISATION

Report Author



Clare Warren
B.Sc. (Hons.)
Technologist

Authorised by



Sarah Wood
B.Eng. (Hons.), AMIOA
Section Supervisor

The Building Test Centre will not discuss the content of this report without written permission from the test sponsor. The Building Test Centre retains ownership of the test report content but authorises the test sponsor to reproduce the report as necessary in its entirety only.

TEST CONSTRUCTION

BTC 14017A

The partition was a British Gypsum GypWall Quiet_{sf} system. 72mm Gypframe 72C50 floor channel was screw fixed at 600mm to the base of the test frame. 72mm Gypframe 72DC 60 head channel was screw fixed to the head of the test frame at 600mm centres. 70mm Gypframe 70S50 studs were positioned at 600mm centres between the head and base track. Gypframe RB1 Resilient Bar was screw fixed perpendicular to the studs at 600mm centres on each side with Gyproc wafer head drywall screws. A single layer of 50mm Isowool APR 1200 was fitted into the cavity.

The metal framework was clad on both sides with a double layer of 15mm Gyproc SoundBloc. The inner layer boards were fixed with Gyproc 25mm drywall screws at 300mm centres around the perimeter of the boards only. The outer layer boards were fixed each side of the metal framework using Gyproc 42mm drywall screws at 300mm centres and at intermediate stud positions.

The perimeter of the partition was sealed to the test aperture with Gyproc sealant. The board joints and screw heads were covered with adhesive tape. Board joints were staggered.

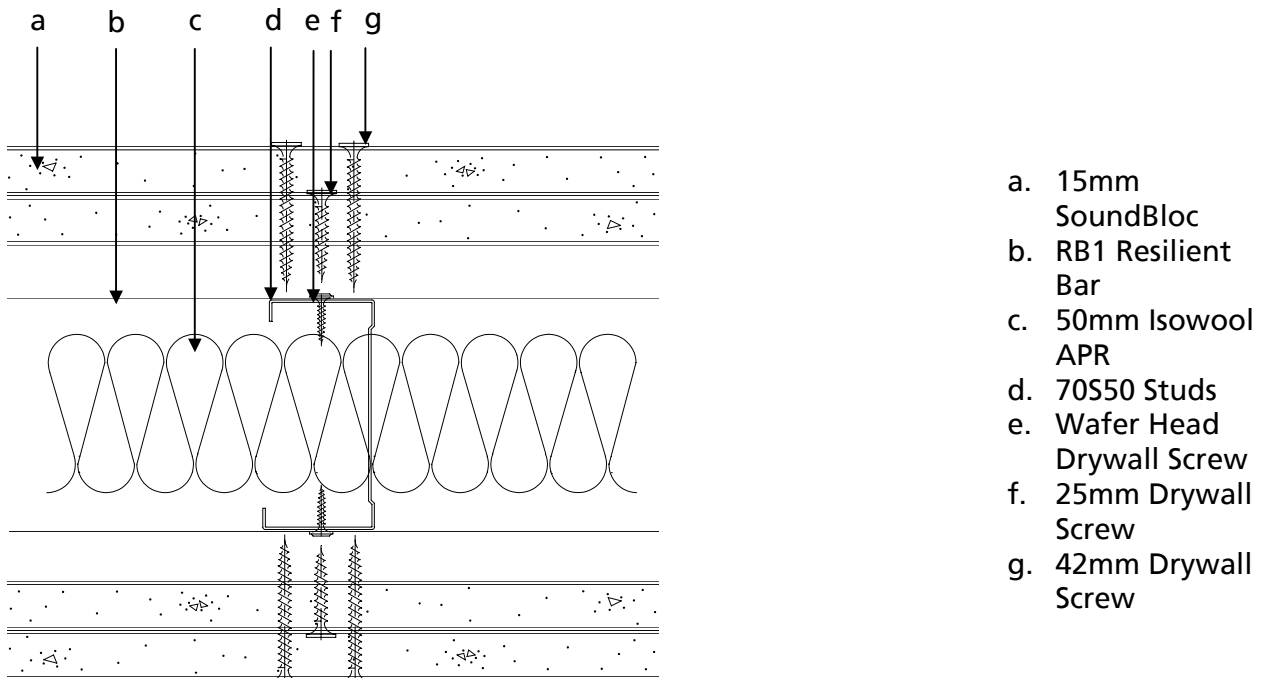


Figure 1. Cross section plan through the partition.

TEST MATERIALS

Gyproc SoundBloc

Nominally 2400mm (long) x 1200mm (wide) x 15mm (thick) Gyproc SoundBloc, manufactured and supplied by British Gypsum Limited.

Average surface density:	13.2 kg/m ²
Average thickness:	15.06mm
Board code:	27 076 5 02:17

The surface density was calculated using the actual weight and size of a selection of the boards used in the test specimen.

Metal components

- i) Nominally 70mm Gypframe 70S50 studs, nominally 0.5mm thick, supplied by British Gypsum Limited.
- ii) Nominally 72mm Gypframe 72C50, nominally 0.5mm thick, supplied by British Gypsum Limited.
- iii) Nominally 72mm Gypframe 72DC50, nominally 0.5mm thick, supplied by British Gypsum Limited.
- iv) Gypframe RB1 Resilient Bar, supplied by British Gypsum Limited.

Insulation

Nominally 50mm thick Isowool APR supplied by British Gypsum Limited.

Fixings

25mm Gyproc drywall screws.
42mm Gyproc drywall screws

Customer: Hilti (Gt. Britain) Limited

BTC 14017A: Page 5 of 9



0296

TEST PROCEDURE

The test specimen (3.6 m x 2.4 m) was constructed in a wall dividing two reverberant rooms of approximately 98m³ and 62m³. The accuracy of the test method conforms to BS EN 20140-2:1993, the test procedure used was 140/3 issue 6. Broad-band white noise was used to measure the level differences and broad-band pink noise was used to measure the reverberation times. Third octave band pass filters were used in real time mode. See Appendix B for further information.

TEST RESULTS

Weighted Airborne Sound Reduction Index

R_w (C; Ctr) = 64 (-3; -8) dB

For full data see pages 7 -8.

Test conducted in accordance with BS EN ISO 140-3: 1995

Rated in accordance with BS EN ISO 717-1: 1997

LIMITATIONS

The results only relate to the behaviour of the element of construction under the particular conditions of test; they are not intended to be the sole criteria for assessing the potential acoustic performance of the element in use nor do they reflect the actual behaviour.

The specification and interpretation of test methods are the subject of ongoing development and refinement. Changes in associated legislation may also occur. For these reasons it is recommended that the relevance of test reports over 5 years old should be considered by the user. The laboratory that issued the report will be able to offer, on behalf of the legal owner, a review of the procedures adopted for a particular test to ensure that they are consistent with current practices, and if required may endorse the test report.

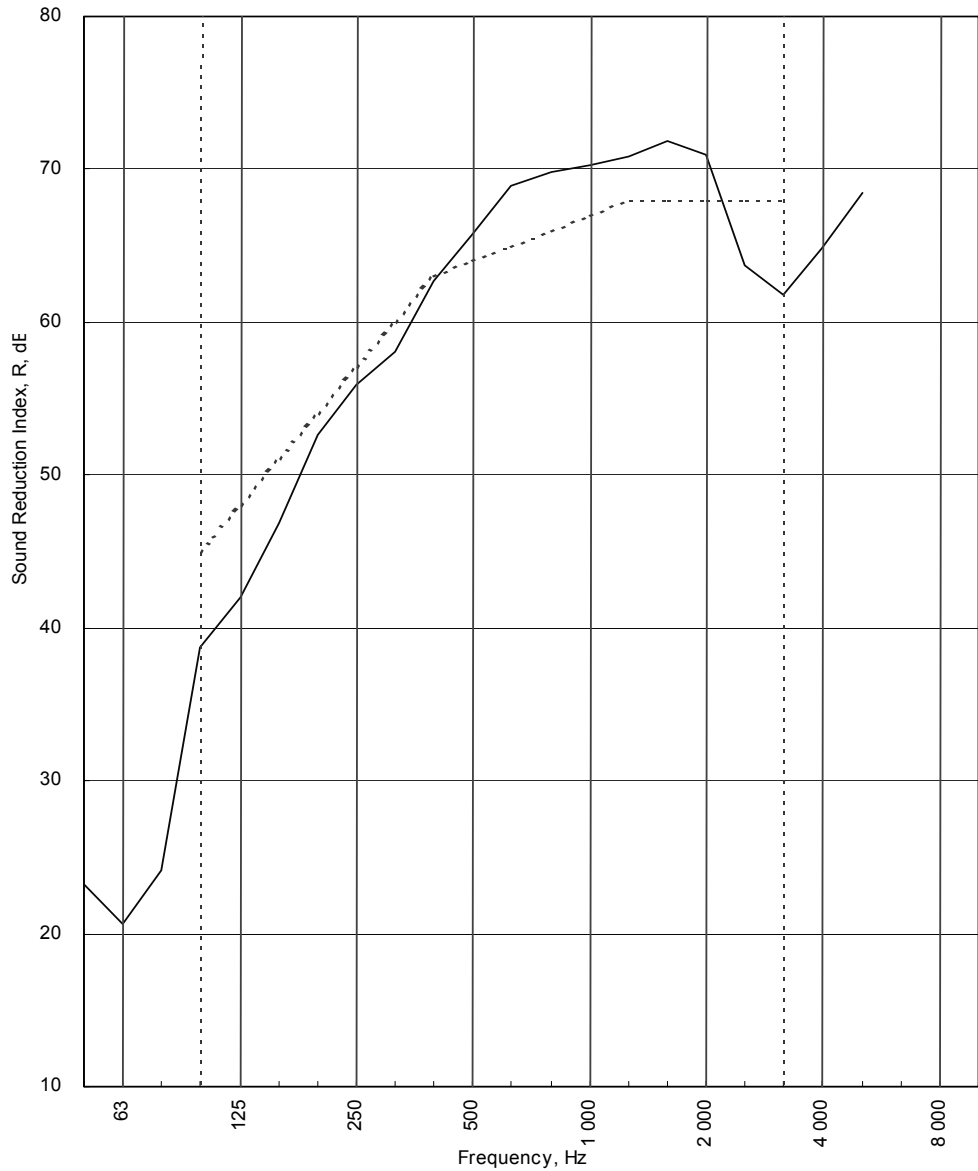
APPENDIX A- TEST DATA

LABORATORY AIRBORNE SOUND INSULATION TEST - BS EN ISO 140-3:1995									
Test Code: H14017CA		Test Date: 13/07/05							
Specimen Area, S = 8.64 m ²		Room T2		Room T1					
		Room Volume, m ³ : 98		Room T1 59.58					
		Temperature, deg.C: 22.4		Room T1 22.6					
		Rel. Humidity, %RH: 66.3		Room T1 69.4					
Freq Hz	Test Room T2 to Test Room T1						R dB	U.Dev. dB	R 1/1Oct dB
	Source dB	Rec. (uc) dB	Bgrnd dB	Rec. (corr) dB	Rev.time Sec	Corr. dB			
50	60.4	35.1	11.4	35.1	0.68	-2.1	23.2		
63	65.3	43.1	5.9	43.1	0.77	-1.6	20.6		22.4
80	68.4	43.2	5.0	43.2	0.86	-1.1	24.1		
100	74.9	35.2	18.9	35.2	0.87	-1.0	38.7	6.3	
125	78.7	36.7	4.4	36.7	1.10	0.0	42.0	6.0	41.4
160	86.7	39.9	0.9	39.9	1.12	0.1	46.9	4.1	
200	92.3	40.8	6.4	40.8	1.41	1.1	52.6	1.4	
250	95.1	40.6	4.1	40.6	1.54	1.4	55.9	1.1	54.9
315	94.3	37.2	8.3	37.2	1.38	1.0	58.1	1.9	
400	93.0	30.8	13.0	30.8	1.25	0.5	62.7	0.3	
500	90.9	25.9	9.3	25.9	1.32	0.8	65.8		65.1
630	89.6	21.8	11.3	21.4	1.29	0.7	68.9		
800	90.6	22.1	10.9	21.8	1.39	1.0	69.8		
1 000	90.3	21.6	6.3	21.6	1.59	1.6	70.3		70.3
1 250	90.5	21.4	6.6	21.3	1.61	1.6	70.8		
1 600	93.7	23.7	11.0	23.5	1.65	1.7	71.9		
2 000	95.2	26.2	12.0	26.0	1.66	1.8	71.0		67.2
2 500	94.2	31.8	7.8	31.8	1.49	1.3	63.7	4.3	
3 150	93.4	32.6	8.3	32.6	1.38	1.0	61.8	6.2	
4 000	92.4	28.8	10.1	28.8	1.44	1.2	64.8		64.2
5 000	89.4	22.2	10.9	21.9	1.39	1.0	68.5		
6 300									
8 000									
10 000									
Single Figure Ratings		Rw	C	Ctr	Total U. Dev., dB		31.6		
BS EN ISO 717-1: 1997		dB	dB	dB					
		64	-3	-8					
		(100-5000)	-2	-8					
Background Corrected		(50-3150)	-11	-24					
		(50-5000)	-10	-24					
					Test Procedure: 140/3/issue 6				
					Worksheet: 140_3_1.XLS				



Test Code:
H14017CA
 Test Date:
13/07/05

Freq. Hz	R dB
50	23.2
63	20.6
80	24.1
100	38.7
125	42.0
160	46.9
200	52.6
250	55.9
315	58.1
400	62.7
500	65.8
630	68.9
800	69.8
1 000	70.3
1 250	70.8
1 600	71.9
2 000	71.0
2 500	63.7
3 150	61.8
4 000	64.8
5 000	68.5
6 300	
8 000	
10 000	



----- Curve of reference values (ISO 717-1)

Rating according to BS EN ISO 717-1:1997	R_w (C;Ctr) = 64 (-3;-8) dB		
Evaluation based on laboratory measurement results obtained by an engineering method:	Max dev. 6.3 dB at 100 Hz		
	C₅₀₋₃₁₅₀ = -11 dB	C₅₀₋₅₀₀₀ = -10 dB	C₁₀₀₋₅₀₀₀ = -2 dB
	C_{tr,50-3150} = -24 dB	C_{tr,50-5000} = -24 dB	C_{tr,100-5000} = -8 dB

Customer: Hilti (Gt. Britain) Limited

BTC 14017A: Page 8 of 9



0296

APPENDIX B - TEST METHOD AND CONDITIONS

The source room (T2) was treated with six perspex diffusers of approximately 900mm x 1220mm. An omni-directional loudspeaker sound source is placed near a back corner of the source room (T2), rotating at 1 rpm and at least 0.7m from any room boundary to satisfy Annex C of BS EN ISO 140-3: 1995. A stationary loudspeaker sound source is placed in the corner of the receiving room (T1) opposite the test specimen.

The average sound pressure level in each 1/3 octave band is measured using a rotating microphone boom, positioned such that the minimum distance between microphone and sound source is 1m and between microphone and room boundaries is 0.7m. The rotating microphone has a sweep radius of at least 1m and is inclined in relation to the boundaries at an angle of at least 30° to the horizontal. The microphone has a traverse time of 32 seconds, and the sound pressure levels are averaged over 64 seconds which is equivalent to two complete sweeps of the microphone boom.

The equivalent absorption area of the receiving room is determined by producing the arithmetic average of six reverberation times and applying this to the Sabine formula.

The test specimen is installed in the aperture so that it finishes flush with the first independent timber in room T2 side to eliminate indirect transmission between rooms. The specimen is not installed so that the aperture depth ratio 2:1 is met as recommended in section 5.2.1 of BS EN ISO 140-3:1995. Laboratory tests have been carried out to prove the insignificance of this installation position on the test results.

The laboratory limit for measurement due to flanking is (combined BTC 11709A and BTC13562EA)

Freq Hz	50	63	80	100	125	160	200	250	315	400	500	630	800	1000	1250	1600	2000	2500	3150	4000	5000
R'max	45.0	46.9	58.5	62.4	62.9	67.7	71.2	77.2	84.2	92.0	97.7	101.5	103.8	97.6	102.4	104.8	101.8	102.9	98.7	93.9	91.1

The figure below shows flanking and isolation treatments in the test chamber.

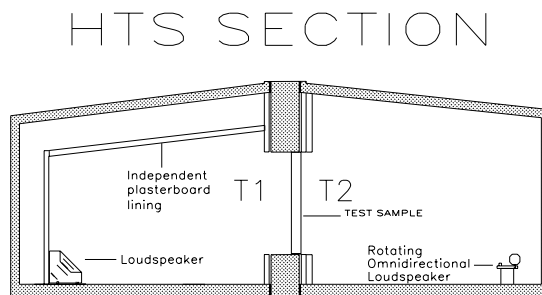


Figure 2. Chamber layout.