



# HILTI FIRESTOP TOP TRACK SEAL (CFS-TTS)

**CFS-TTS is used at the deflection head detail of drywall partition systems to provide an effective fire and acoustic barrier.**





# REVOLUTIONARY PREFORMED DEVICE

**Hilti Firestop  
Top Track Seal  
(CFS-TTS)**

Hilti Top Track Seal is a revolutionary preformed device that provides the most efficient way to firestop top-of-wall and deflection head firestop joints between plasterboard wall and concrete slabs and metal decks



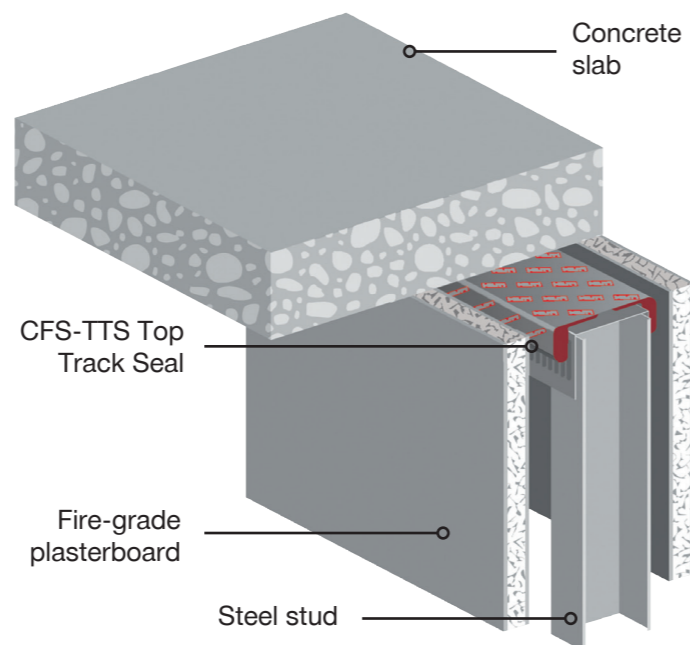
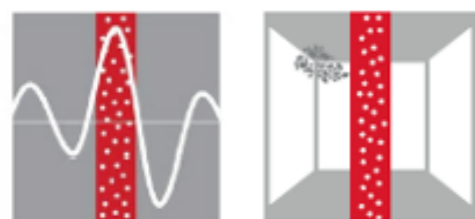
The CFS-TTS Top Track Seal significantly increases the efficiency and productivity onsite when constructing top-of-wall and deflection head details for plasterboard walls providing a fire rated seal on both side of the wall once the fire rated plasterboard lining is installed.

The Hilti CFS-TTS system eliminates the need to use layers of plasterboard strips as packers between the soffit and deflection head track used in traditional deflection head details. The Hilti CFS-TTS Top Track Seal is simply applied to the deflection head track using the adhesive backing and is secured in place using the same fixing required for the deflection head track to fix to the soffit.

The joint system is tested and approved for fire rating for 20 mm deflection head for various wall configurations. The joint system is designed to accommodate nearly full compression and up to 50% deflection at half max joint when designed for compression and extension. While also achieving Sound Transmission Class (STC) ranging from 49 to 68 for different kind of wall configurations.

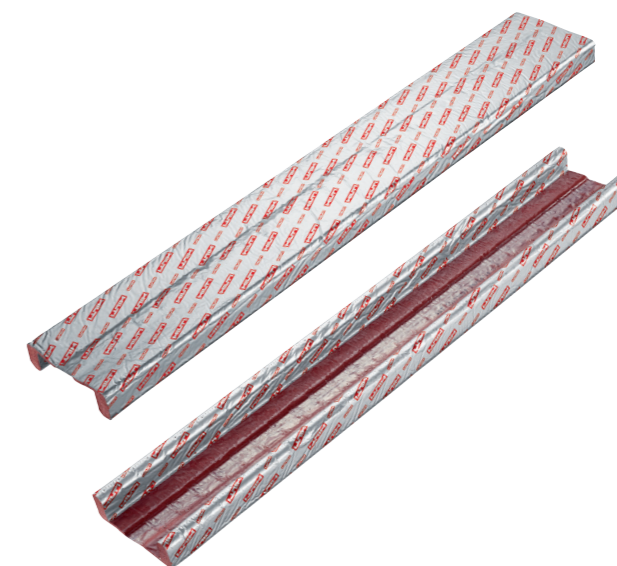
## FEATURES

- Easy Installation
- Versatile solution for all track widths
- Minimal product wastage
- Makes inspection easier
- Light weight
- Mould and mildew resistant



## TECHNICAL DATA

Colour	CFS-TTS: Red/Silver
Length (mm)	3060
Paintable	Yes
Can it be Plastered Over	Yes
Recommended Application Temp Range	-5 °C to 50 °C
Storage Temperature Range	-10 °C to 50 °C
Sound Transmission Class (STC)	49 to 68 (for different wall configurations)
Leed VOC	22g/l
Mould and Mildew Performance	Class 0 (ASTM G21-96) Class 0 (EN ISO 846)
Shelf Life	Unlimited
Air Permeability (EN12207)	Class 4 @100 Pa: Q100 = 0.032/(h m)
Tested to:	AS1530.4 & AS4072.1, UL2079, EN1364-1



Item Number	Hilti Top Track Seal	Track Size (mm)	Box Qty
	CFS-TTS E6	64 - 65	20
	CFS-TTS E7	71 - 77	20
	CFS-TTS E9	92 - 98	20
	CFS-TTS ES	Single Studs ≥92mm & Double Stud Walls	20



# TESTED SYSTEMS

Hilti CFS-TTS Top Track Seal protecting top track in flexible walls on the underside of flat concrete slabs

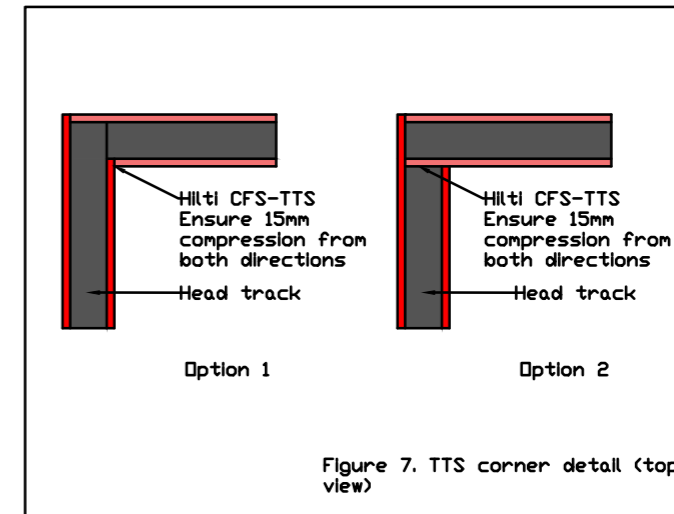
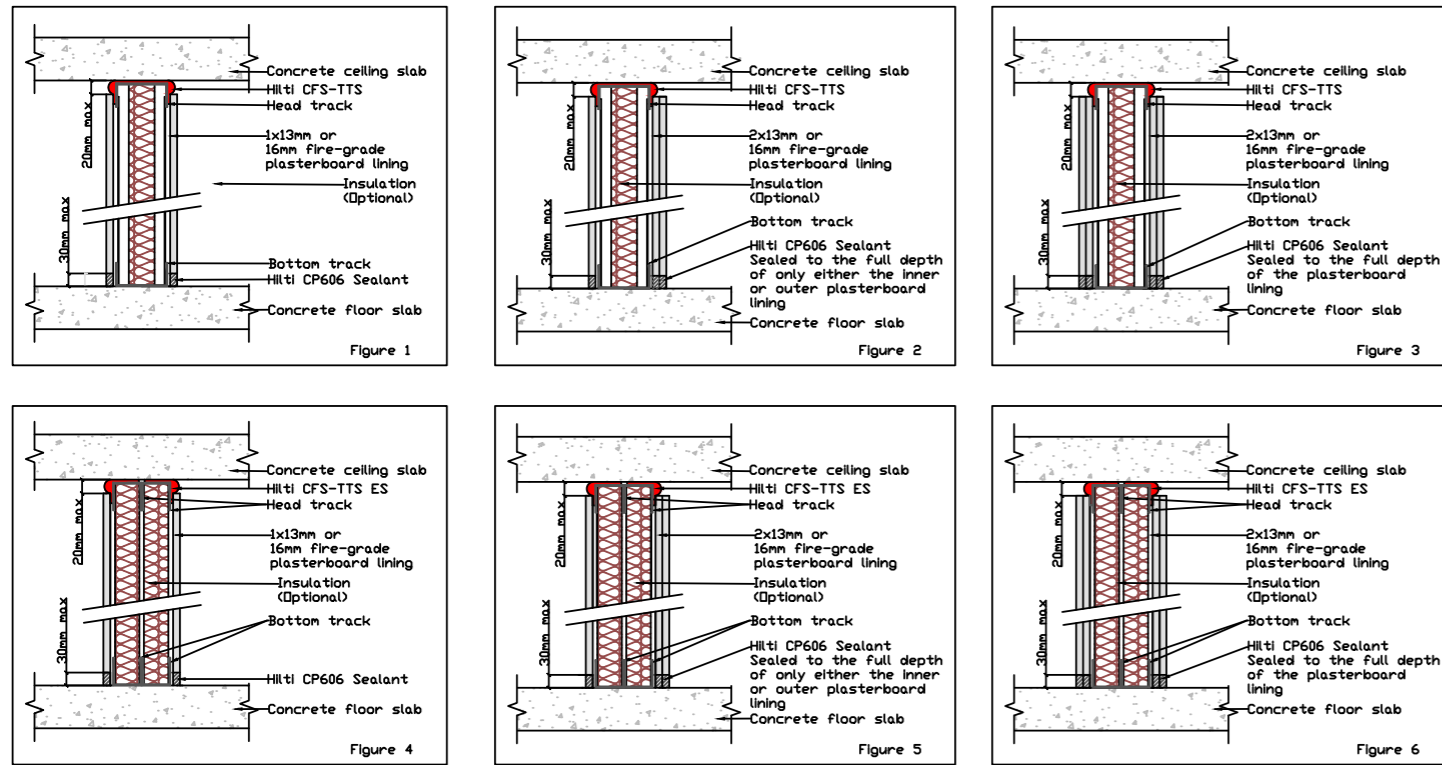


Figure 7 Conjoint Option 1&2

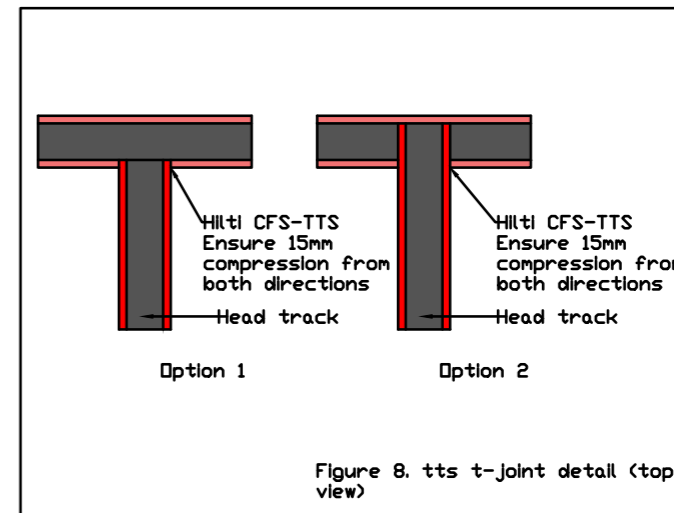


Figure 8 T-Joint Option 1&2

Figure	Wall Construction Type	Minimum Stud Thickness (mm)	Minimum Wall Thickness (mm)	Maximum Deflection Head Joint Height (mm)	FRR/FRL
1, 4	1 x 13mm Fire Rated Plasterboard each side of steel stud	64	90	20	-/60/60 (Any CFS-TTS type)
2, 5	1 x 13mm Fire Rated Plasterboard on side One, 2 x 13mm Fire Rated Plasterboard on side Two.	64	103		-/60/60 (Any CFS-TTS type)
1, 4	1 x 16mm Fire Rated Plasterboard each side of steel stud	64	96		-/90/90 (Any CFS-TTS type)
3, 6	2 x 13mm Fire Rated Plasterboard each side of steel stud	64	116		-/120/120 (Any CFS-TTS type)
3, 6	2 x 16mm Fire Rated Plasterboard each side of steel stud	64	128		-/120/120 (Any CFS-TTS type)

Note: All FRR applicable for Double Stud Wall Configurations and stud widths greater than 64mm as well as the below joint details;

7 Corner Joint Opt.1&2

8 T-Joint Opt. 1&2

9 Vertical & Horizontal Joint

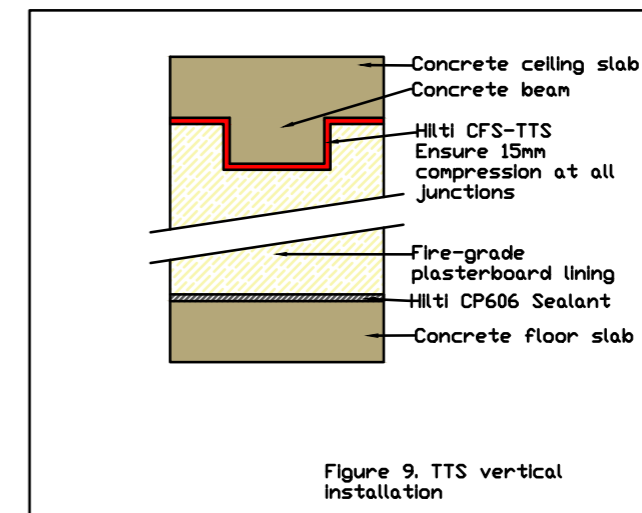


Figure 9 Vertical & Horizontal Joint

**Hilti CFS-TTS Top Track Seal protecting top track in flexible walls on the underside of composite metal deck floors**

**Hilti CFS-TTS Top Track Seal protecting top track in flexible walls on the underside of uneven flat concrete slabs**

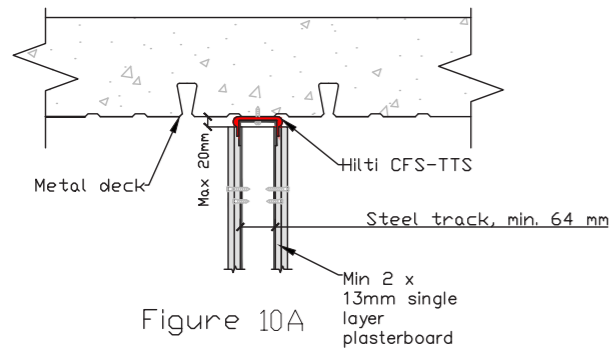


Figure 10A

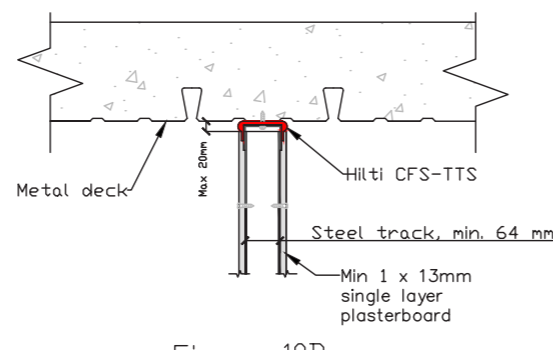


Figure 10B

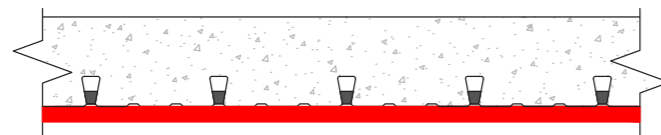


Figure 10C

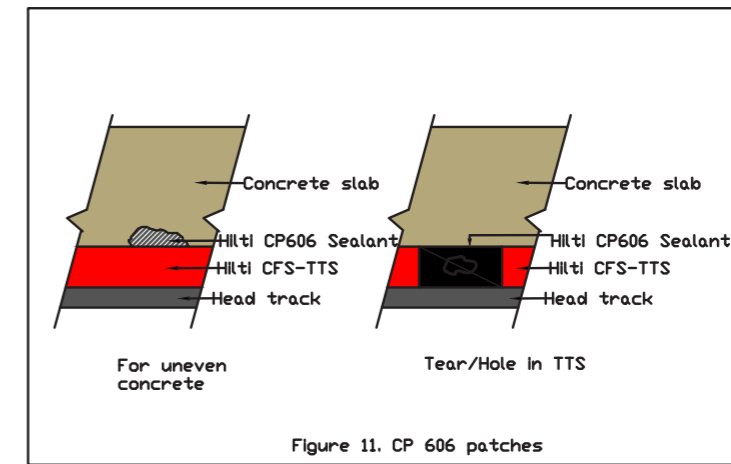


Figure 11. CP 606 patches

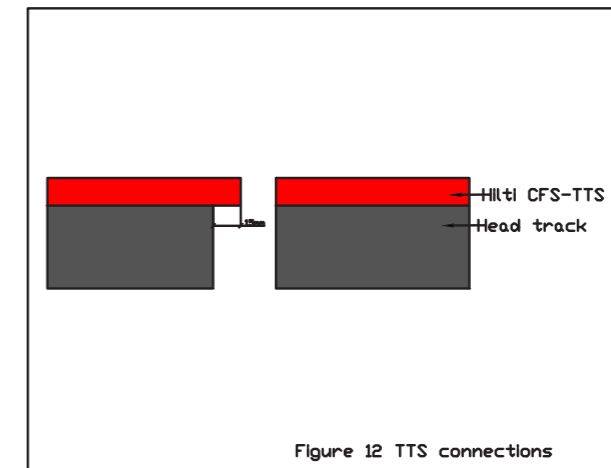
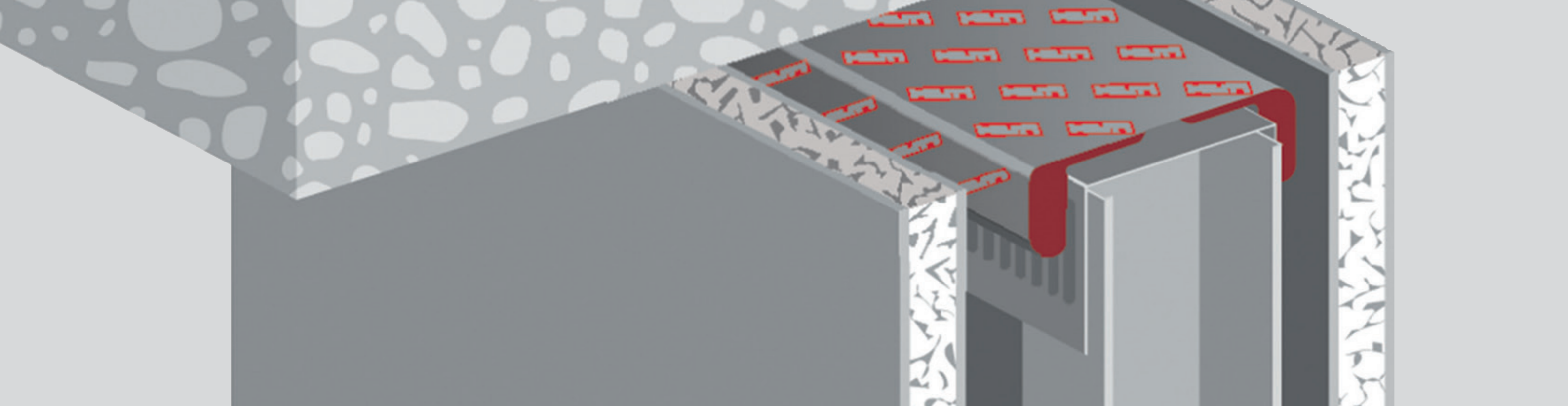


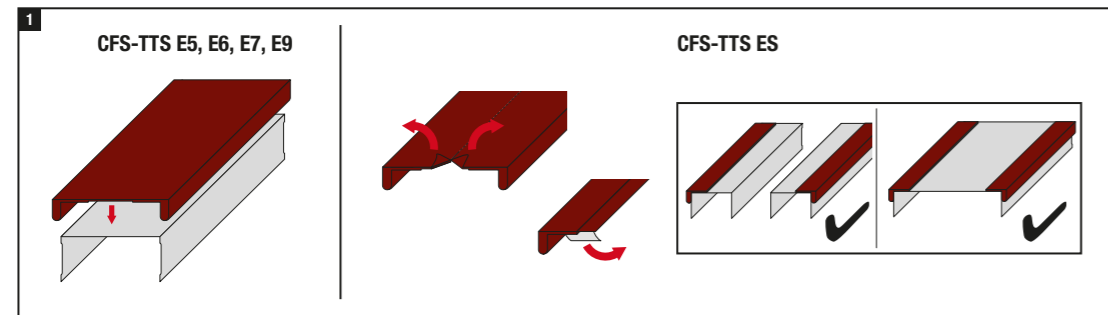
Figure 12 TTS connections

Figure	Wall Construction Type	Minimum Stud Thickness (mm)	Minimum Wall Thickness (mm)	Metal Deck Profile Limitations	Metal Deck Profile Sealing Requirements	Maximum Deflection Head Joint Height (mm)	FRR/FRL
10a, 10b, 10c	1 x 13mm Fire Rated Plasterboard each side of steel stud	64	90	Maximum Profile Height 65mm, Overall Profile area ≤ .00957m <sup>2</sup> for each profile	Hilti CP606 applied to depth of 10mm on each face, with centre cavity completely filled with tightly packed mineral stone/rock wool (Min. density of 100kg/m <sup>3</sup> )	20	-/60/60 (Any CFS-TTS type)
	1 x 13mm Fire Rated Plasterboard on side One 2 x 13mm Fire Rated Plasterboard on side Two	64	103				-/60/60 (Any CFS-TTS type)
	1 x 16mm Fire Rated Plasterboard each side of steel stud	64	96				-/90/90 (Any CFS-TTS type)
	2 x 13mm Fire Rated Plasterboard each side of steel stud	64	116				-/90/90 (Any CFS-TTS type)
	2 x 16mm Fire Rated Plasterboard each side of steel stud	64	128				-/90/90 (Any CFS-TTS type)
Note: All FRR applicable for Double Stud Wall Configurations and stud widths greater than 64mm as well as;							
10c	Top – of – Wall Perpendicular to metal deck profile						
10a,b	Top – of – Wall Parallel with lower flute of metal deck profile						

Figure	Wall Construction Type	Minimum Stud Thickness (mm)	Minimum Wall Thickness (mm)	Metal Deck Profile Limitations	Metal Deck Profile Sealing Requirements	Maximum Deflection Head Joint Height (mm)	FRR/FRL
11	1 x 13mm Fire Rated Plasterboard each side of steel stud	64	90	30	Hilti CP606 applied to depth of 25mm on each face, with centre cavity completely filled with tightly packed mineral stone/rock wool (Min. density of 100kg/m <sup>3</sup> )	20	-/60/60 (Any CFS-TTS type)
	1 x 13mm Fire Rated Plasterboard on side One, 2 x 13mm Fire Rated Plasterboard on side Two.	64	103				-/60/60 (Any CFS-TTS type)
	1 x 16mm Fire Rated Plasterboard each side of steel stud	64	96				-/90/90 (Any CFS-TTS type)
	2 x 13mm Fire Rated Plasterboard each side of steel stud	64	116				-/120/120 (Any CFS-TTS type)
	2 x 16mm Fire Rated Plasterboard each side of steel stud	64	128				-/120/120 (Any CFS-TTS type)
Note: All FRR applicable for Double Stud Wall Configurations and stud widths greater than 64mm as well as the below joint details;							
7	Corner Joint Opt.1&2						
8	T-Joint Opt. 1&2						
9	Vertical & Horizontal Joint						

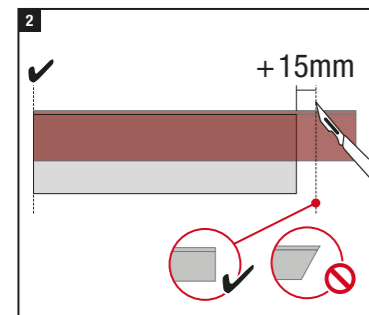


## INSTRUCTIONS FOR USE

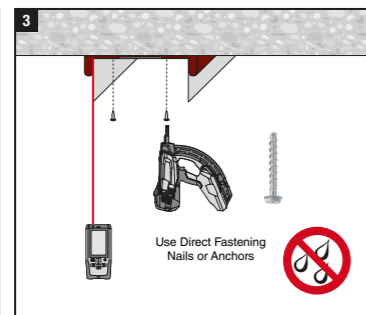


Fit CFS-TTS E6, E7 or E9 onto the top track

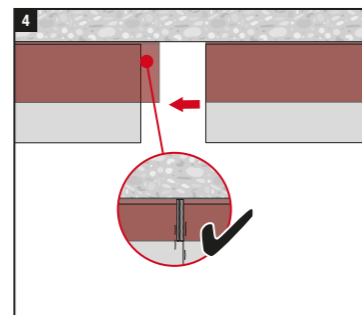
If using CFS-TTS ES, split the TTS down the middle along the pre cut lines  
Remove adhesive tape backing and attach onto the top track as shown above.



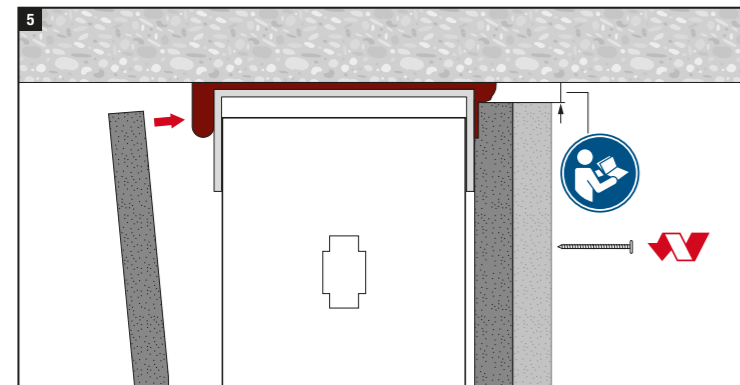
Cut the CFS-TTS such that there is an extra 15mm from both ends of the track



Fasten the top track with the CFS-TTS to the underside of the slab.  
Ensure surfaces are clean and dry.



When joining two pieces of CFS-TTS together, a length of 15mm must be compressed at the joint as shown. This applies to CFS-TTS on separate tracks or on the same track.















Install fire rated plasterboard lining according to the plasterboard manufacturer's recommendations.

## FRL/FRR

All FRL/FRR are achieved when CFS-TTS and Steel Tracks are installed with the following fixings with maximum spacing of 600mm between centres, see Table 1.

Table 1

Hilti Fixings	Installation Tools	Hilti Fixings	Installation Tools
X-C 20 MX	Hilti DX 5 	HUS3-P 6 x 40/5	Hilti SID 22A, SIW 22/22-T, TE-4-A22
X-C 22 P8		HUS-6 x 35	
S15 -TH		HUS-H/P 6 x 40	
X-C20 B3 MX	Hilti BX 3 	HUS-H 6 x 45	
X-P 17 B3 MX		HUS3-PS (Range)	
X-P 20 B3 MX		HUS3-H/P 6 x60	
X-P 24 B3 MX		HUS3-H 8 (Range)	
X-P 17 G3 MX	Hilti GX 3 	HUS3-H 10 (Range)	
X-P 24 G3 MX		DBZ 6/4.5	
X-GN 20 MX	Hilti GX 120 	HFB 6 x 35	
X-GHP 18 MX			

**Disclaimer:** All of the information provided was accurate to our best knowledge at the time of publication for full installation details refer to latest version of Warringtonfire Regulatory Information Report No. FAS200132.



Hilti (NZ) Limited | Level 1, Tower B, 600 Great South Rd, Ellerslie, Auckland, New Zealand  
P.O. Box 112-030 | Penrose | T 0800 444 584 | F 0800 329 445 | [www.hilti.co.nz](http://www.hilti.co.nz)