



APPLICATION:

Mixed Service Penetration

ID:

GB2003

INFORMATION:

- Not to scale
- All units are in millimetres
- Tested to BS 476: Part 20 (1987)
- Sound insulation values
- Gas tightness

CP 670 Firestop Board (FACE-FIX)

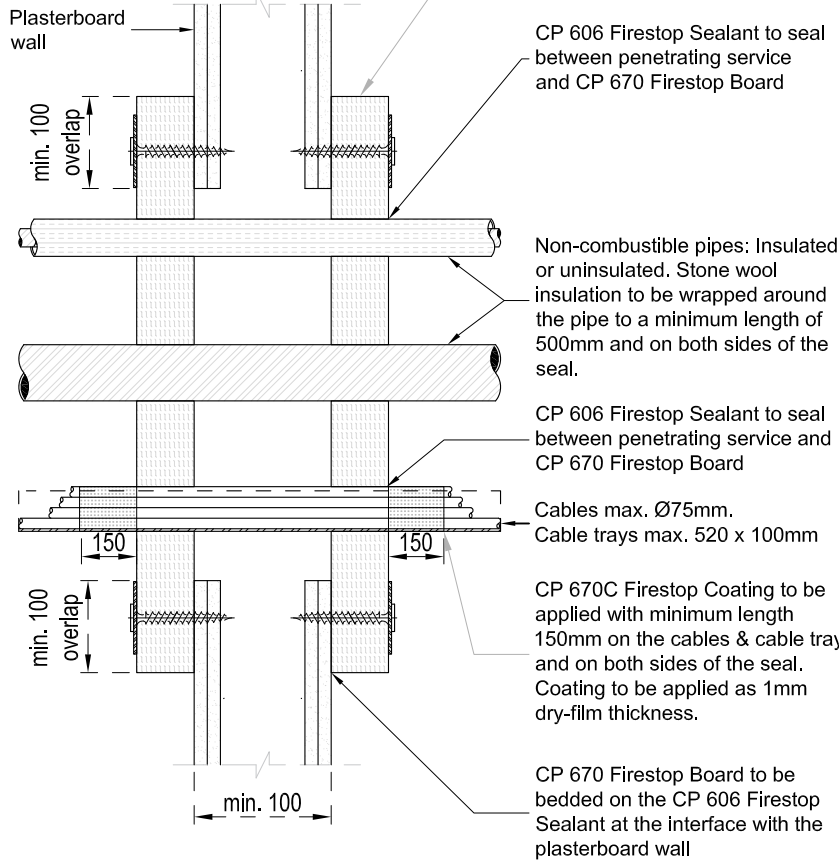
CP 670

REV:
00

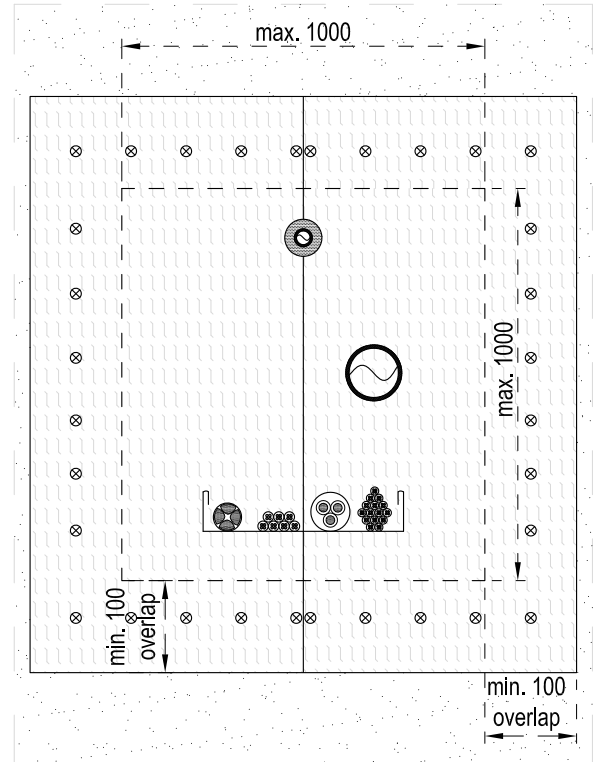
Fire Rating to 120mins

Page 1/4

CP 670 Firestop Board: Face-fixed to plasterboard wall with S-DS 01 B 4,8 x 100 drywall screws & M6 x 28 steel washers installed at max. 150mm spacing distances. CP 606 Firestop Sealant to seal all edges and butt joints. Liberally coat all exposed stone wool on the CP 670 Firestop Boards with CP 606 Firestop Sealant.



Section view



Elevation view

Gas tightness (m ³ /h/m ²) to EN 1026		
	▲50 Pa	▲250 Pa
N ₂	≤ 0.032	≤ 0.159
CO ₂	≤ 0.060	≤ 0.299
CH ₄	≤ 0.065	≤ 0.327

Sound insulation values for guidance (EN ISO 140-3, 140-10, 717-1)
Flexible wall
D _{nw} = 52dB
R _w = 37dB

Screw type*	Length (mm)	Total plasterboard (mm)		
		25	15	12,5
S-DS 01B 4.8 X 100	100	150**	80	75
S-DS 01B 4.8 X 90	90	150	80	75
S-DS 01B 4.2 X 80	80	130	70	60
S-DS 01B 4.2 X 70	70	x	70	60

*Screws require M6 x 28 steel washers (item code no. 282860)
**Denotes a standard fix

- The application limits on this detail are for guidance purposes only. For more detailed information based on the full range of available test results please contact the Hilti Technical Advisory Service.
- The product and application has been assessed as a minimum to the BS 476 standard. It may have additional European and worldwide testing. Please contact Hilti for further information.
- All installations should be carried out in accordance with Hilti's installation instructions and by competent & experienced installers using Hilti branded products.
- All services are to be correctly and adequately supported to prevent collapse and distortion.

Hilti (Gt. Britain) Limited | 1 Trafford Wharf Road | Trafford Park | Manchester M17 1BY

Freephone: 0800 886 100 | Website: www.hilti.co.uk

LEGAL NOTICE: This template contains Hilti Intellectual Property which is legally protected, including Community registration of Hilti trademarks. For use only by Hilti customers and in conjunction with Hilti products. No third party use/products is authorised and breaches Hilti's intellectual property rights. Hilti accepts no responsibility for unauthorized use and reserves all rights to take legal action to enforce its rights in law.



APPLICATION:

Mixed Service Penetration

ID:

GB2003

INFORMATION:

- Not to scale
- All units are in millimetres
- Tested to BS 476: Part 20 (1987)
- Sound insulation values
- Gas tightness

CP 670 Firestop Board (FACE-FIX)

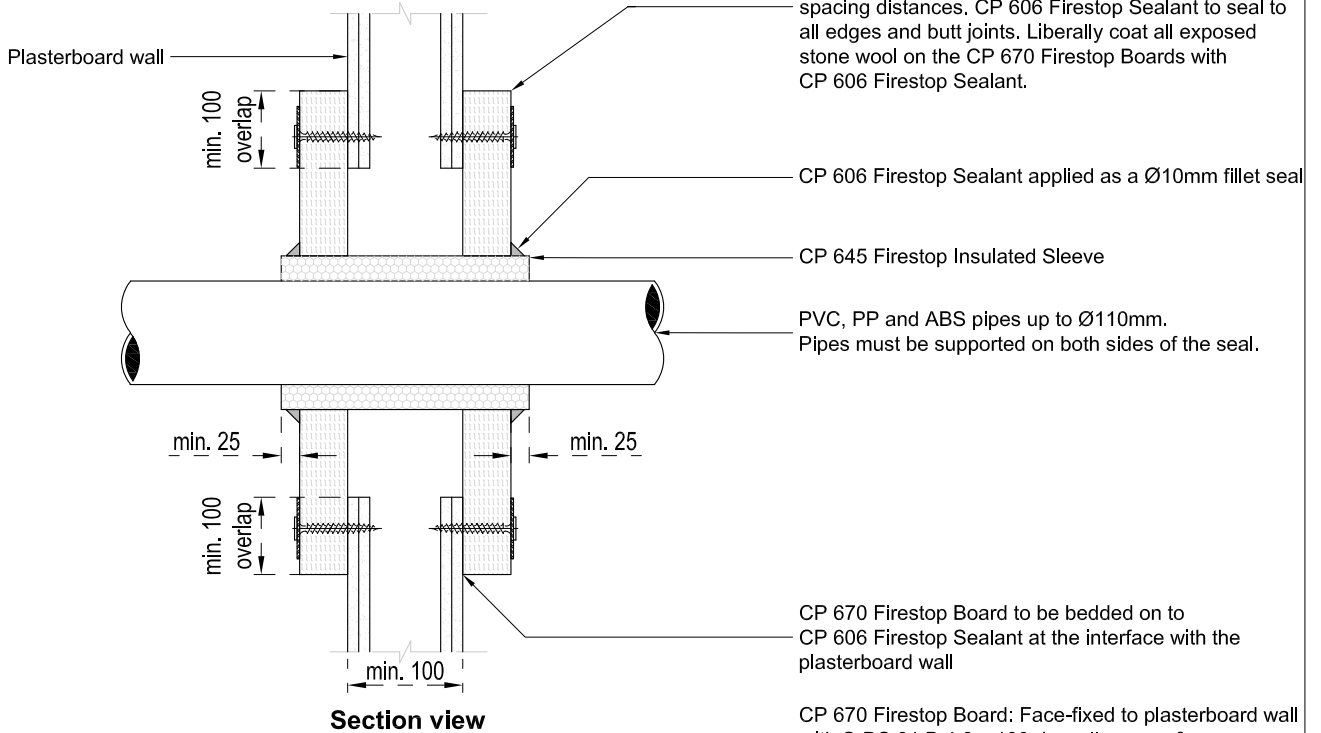
CP 670

REV:
00

Fire Rating to 120mins

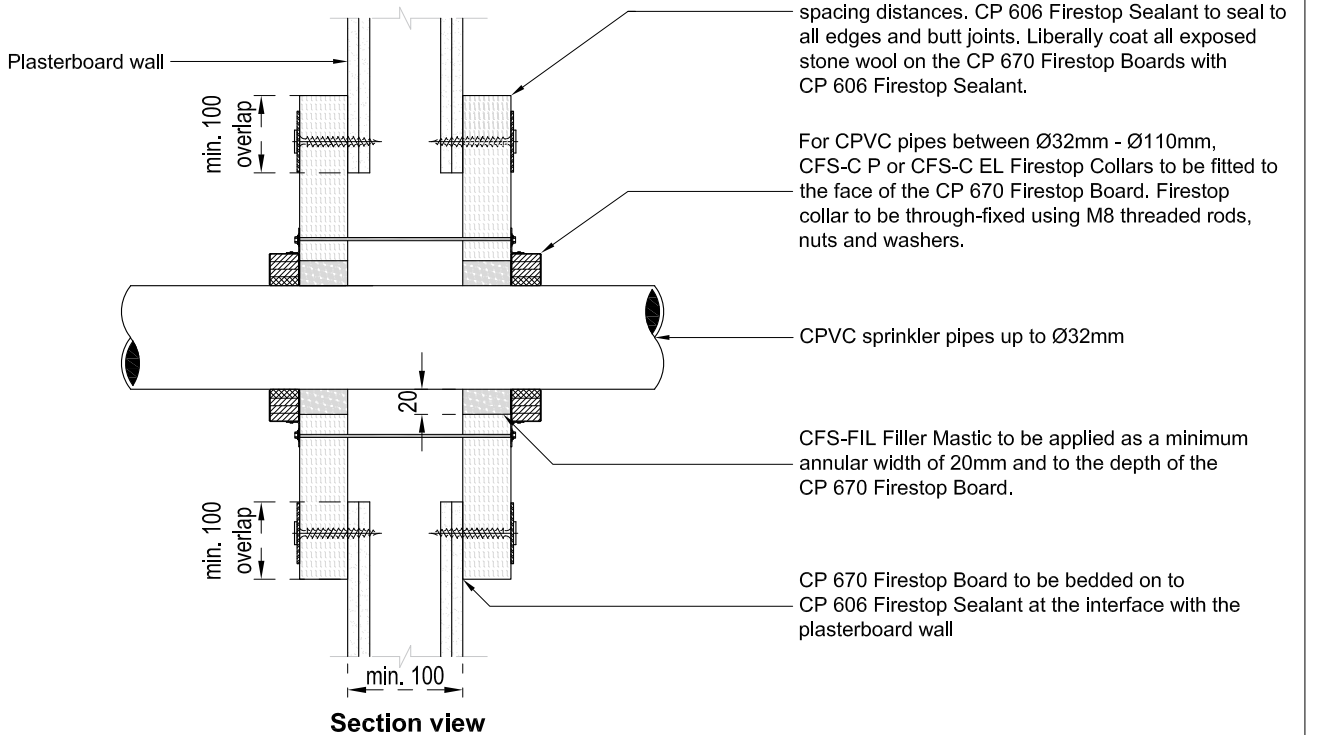
Page 2/4

Plastic pipe details:



CP 670 Firestop Board: Face-fixed to plasterboard wall with S-DS 01 B 4.8 x 100 drywall screws & M6 x 28 steel washers installed at max. 150mm spacing distances. CP 606 Firestop Sealant to seal to all edges and butt joints. Liberally coat all exposed stone wool on the CP 670 Firestop Boards with CP 606 Firestop Sealant.

****Plastic sprinkler pipe details:**



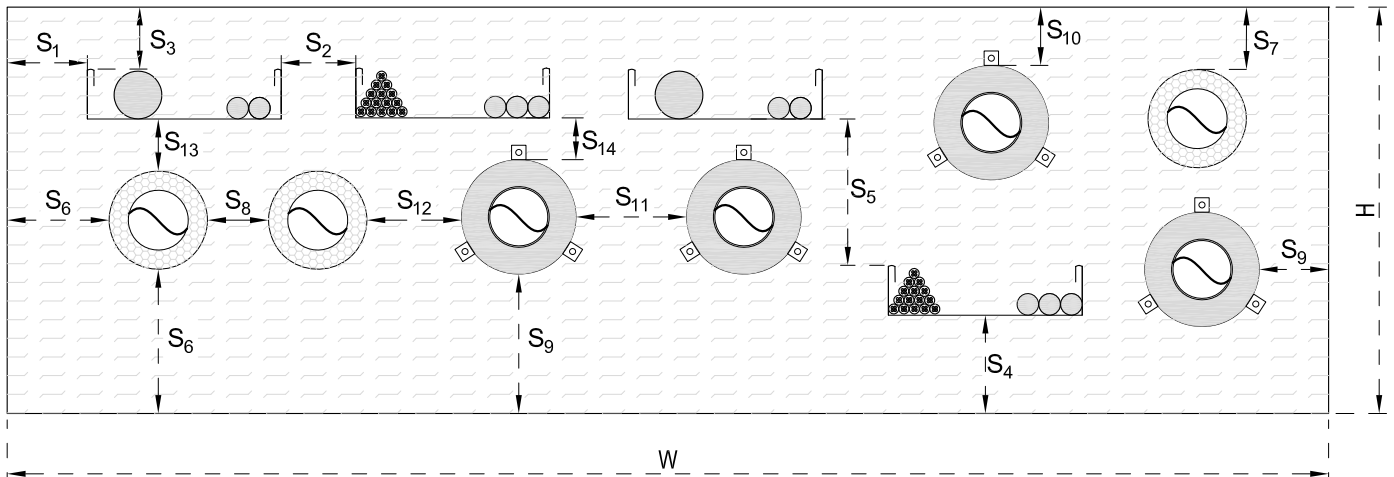
****NOTE: THIS DETAIL REQUIRES A BESPOKE HILTI ENGINEERING JUDGMENT**

1. The application limits on this detail are for guidance purposes only. For more detailed information based on the full range of available test results please contact the Hilti Technical Advisory Service.
2. The product and application has been assessed as a minimum to the BS 476 standard. It may have additional European and worldwide testing. Please contact Hilti for further information.
3. All installations should be carried out in accordance with Hilti's installation instructions and by competent & experienced installers using Hilti branded products.
4. All services are to be correctly and adequately supported to prevent collapse and distortion.

INFORMATION:

- Not to scale
- All units are in millimetres
- Tested to BS 476: Part 20 (1987)
- Sound insulation values
- Gas tightness

CP 670 Firestop Board (FACE-FIX)
CP 670

 REV:
00
Fire Rating to 120mins
Page 3/4
CP 670 Firestop Boards (FACE-FIX) - Assessed allowable service spacing distances


Reference	Distance (mm)	Spacing Information
S ₁	0	Distance between cables/cable supports and seal edge
S ₂	0	Distance between cable supports
S ₃	0	Distance between cables and upper seal edge
S ₄	0	Distance between cable supports and bottom seal edge
S ₅	50	Distance between cables and cable support above
S ₆	3	Distance between metal pipes and seal edge
S ₇	3	Distance between metal pipes and upper seal edge
S ₈	0	Distance between metal pipes
S ₉	17	Distance between plastic pipes/pipe closure devices and seal edge
S ₁₀	17	Distance between plastic pipes/pipe closure devices and upper seal edge
S ₁₁	0	Distance between plastic pipes/pipe closure devices
S ₁₂	30	Distance between metal pipes and plastic pipes/pipe closure devices
S ₁₃	3	Distance between cables/cable supports and metal pipes
S ₁₄	40	Distance between cables/cable supports and plastic pipes/pipe closure devices
<i>Note: Spacing distances obtained from the more rigorous EN 1366-3 testing regime.</i>		
CP 670 Coated Board (FACE-FIX) maximum opening size: 1000 x 1000 (W x H)		
For multiple openings, the separation distance between openings = 200mm		

Additional Notes:

1. All services must be rigidly supported on both sides of the wall with a maximum distance of 500mm. All service support systems are to be fire-rated and provide support for the required fire rating duration.
2. The plasterboard wall/concrete wall must be a minimum thickness of 100mm with a minimum fire rating of 120mins.
3. Pipe insulation criteria: non-combustible stone wool insulation with a density of 40kg/m³ and a minimum length of 500mm from each face of the seal.
4. Apply CP 670C Firestop Coating of 1mm dry film thickness for individual cables or cable bundles Ø20mm - Ø75mm on both sides of the seal and with a minimum coating length of 150mm on each face of the seal to achieve a 120mins insulation rating.

1. The application limits on this detail are for guidance purposes only. For more detailed information based on the full range of available test results please contact the Hilti Technical Advisory Service.
2. The product and application has been assessed as a minimum to the BS 476 standard. It may have additional European and worldwide testing. Please contact Hilti for further information.
3. All installations should be carried out in accordance with Hilti's installation instructions and by competent & experienced installers using Hilti branded products.
4. All services are to be correctly and adequately supported to prevent collapse and distortion.



APPLICATION:

Mixed Service Penetration

ID:

GB2003**INFORMATION:**

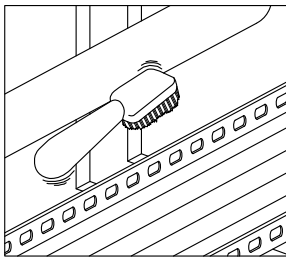
- Not to scale
- All units are in millimetres
- Tested to BS 476: Part 20 (1987)
- Sound insulation values
- Gas tightness

CP 670 Firestop Board (FACE-FIX)**CP 670**REV:
00**Fire Rating to 120mins****Page 4/4**

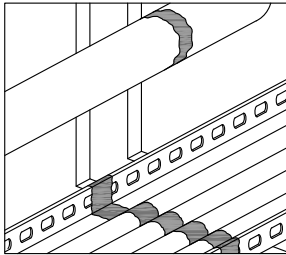
Product Description

Hilti CP 670 Firestop Board is a stone wool board pre-coated with Hilti CP 670C Firestop Coating. The CP 670 firestop board is supplied as boards of dimensions 1200 x 600 x 50mm. The CP 670C firestop coating thickness is 0.7mm and is a white, ablative, flexible one-component product essentially composed of a filling substance and water based acrylic binder.

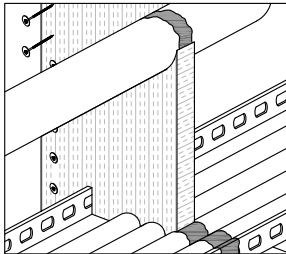
Installation Instructions



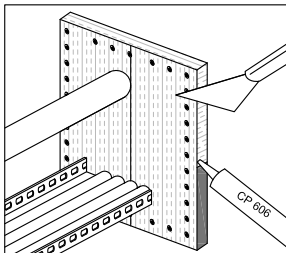
1. Clean the opening. Cables and supporting structures must be free of dust, grease or oil and installed in compliance with local building standards and/or manufacturer's instructions



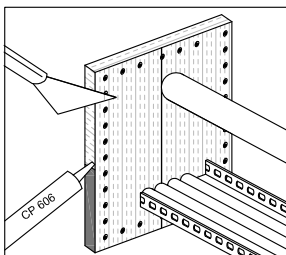
2. Apply CP 606 firestop sealant to wall face surrounding opening. Apply CP 606 firestop sealant between the joints of the penetrating services and CP 670 firestop boards.



3. Cut the CP 670 firestop board to suit the opening of the penetrating services and to overlap on the wall face, covering the opening with a minimum 100mm overlap on all sides and edges. Secure the CP 670 firestop board to the wall using S-DS 01 B 4.8 x 100 screws & M6 x 28mm steel washers at maximum 150mm spacing distances.



4. Repeat to provide full closure of the opening. Ensure all exposed stone wool edges are liberally coated with CP 606 firestop sealant.



5. Repeat steps 1-4 and replicate on the opposite side of the partition wall. For a 120min fire rating, all cable diameters to use CP 670C firestop coating (*min. 1mm dry-film thickness*).

1. The application limits on this detail are for guidance purposes only. For more detailed information based on the full range of available test results please contact the Hilti Technical Advisory Service.
2. The product and application has been assessed as a minimum to the BS 476 standard. It may have additional European and worldwide testing. Please contact Hilti for further information.
3. All installations should be carried out in accordance with Hilti's installation instructions and by competent & experienced installers using Hilti branded products.
4. All services are to be correctly and adequately supported to prevent collapse and distortion.

Hilti (Gt. Britain) Limited | 1 Trafford Wharf Road | Trafford Park | Manchester M17 1BY

Freephone: 0800 886 100 | Website: www.hilti.co.uk

LEGAL NOTICE: This template contains Hilti Intellectual Property which is legally protected, including Community registration of Hilti trademarks. For use only by Hilti customers and in conjunction with Hilti products. No third party use/products is authorised and breaches Hilti's intellectual property rights. Hilti accepts no responsibility for unauthorized use and reserves all rights to take legal action to enforce its rights in law.