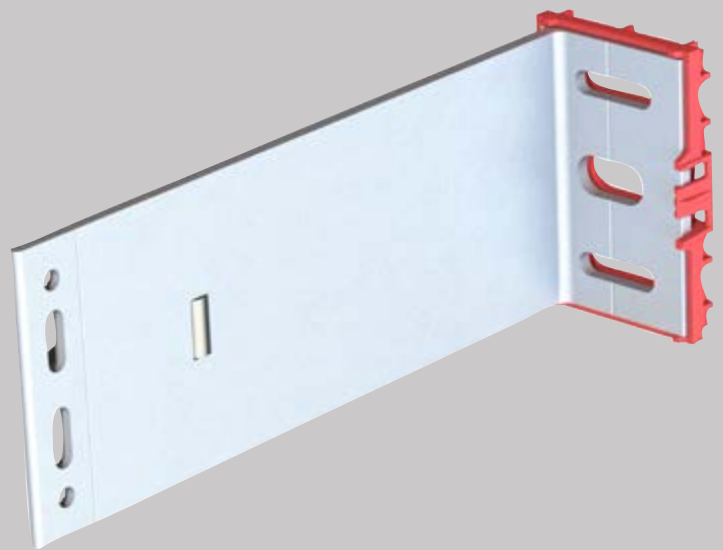




MFT-FOX VI-1L- WOOD

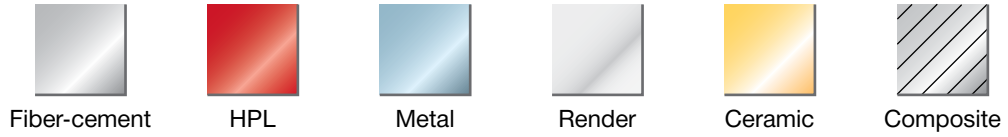
Hilti facade system



CONTENT AND OVERVIEW

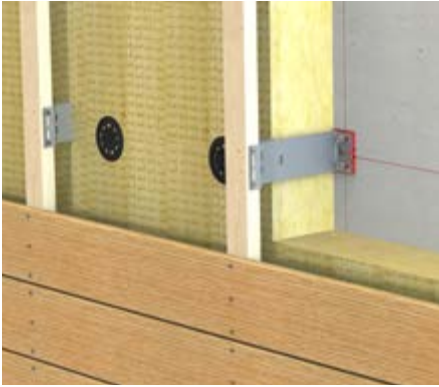
Panels	3
Application and Description	4
System Drawings	5-18
Brackets Range	
MFT-FOX VI Small	19
MFT-FOX VI Medium	20
MFT-FOX VI Large	21
Bracket Profile Adjustment	22
Products Range	23-24

MFT-FOX VI-1L-wood



This is an interactive page! Click on the move-back button to jump back to the CONTENT AND OVERVIEW.





APPLICATION AND DESCRIPTION

MFT-FOX VI-1L-wood

The system consists of aluminium brackets and mounting element, and the system is specifically designed for vertical substructures in ventilated facades in combination with timber battens.

The brackets are supplied with pre-assembled isolators and, according to the method of installation to the base material – anchors, screws or direct fastening – with different hole geometries in the base plate (available hole geometries are shown in the catalogue or on the following pages). Additional to the brackets the system consists of bracket extensions to connect the timber battens to the brackets.

The adjustment of the profiles against the brackets is facilitated by a 'helping hand'. The helping hand keeps the profile in position whilst the profile is being fixed with screws, allowing a fast connection to the bracket. With this system, wall tolerances of up to 40 mm can be perfectly balanced. The brackets are available in 3 different sizes (large, medium & small) from 40 mm to 300 incl. 6 mm isolator in 20 mm increments. The isolator separates the substructure from the base material to reduce thermal bridging.

The timber battens are fixed with stainless steel screws to the mounting element .

Advantages

- Flexible design using fixed and flexible points
- 3 different sizes of brackets (large, medium & small)
- Different sizes of bracket extensions
- 40 mm adjustment capability of the profiles in the brackets
- Brackets can be mounted using a range of methods - anchors, screws or direct fastening
- 6 mm isolator separates the substructure from the base material to reduce thermal bridging
- Substructures can be designed with PROFIS Facade to generate technically-sound and economically optimized solutions
- Can be used with all common cladding materials

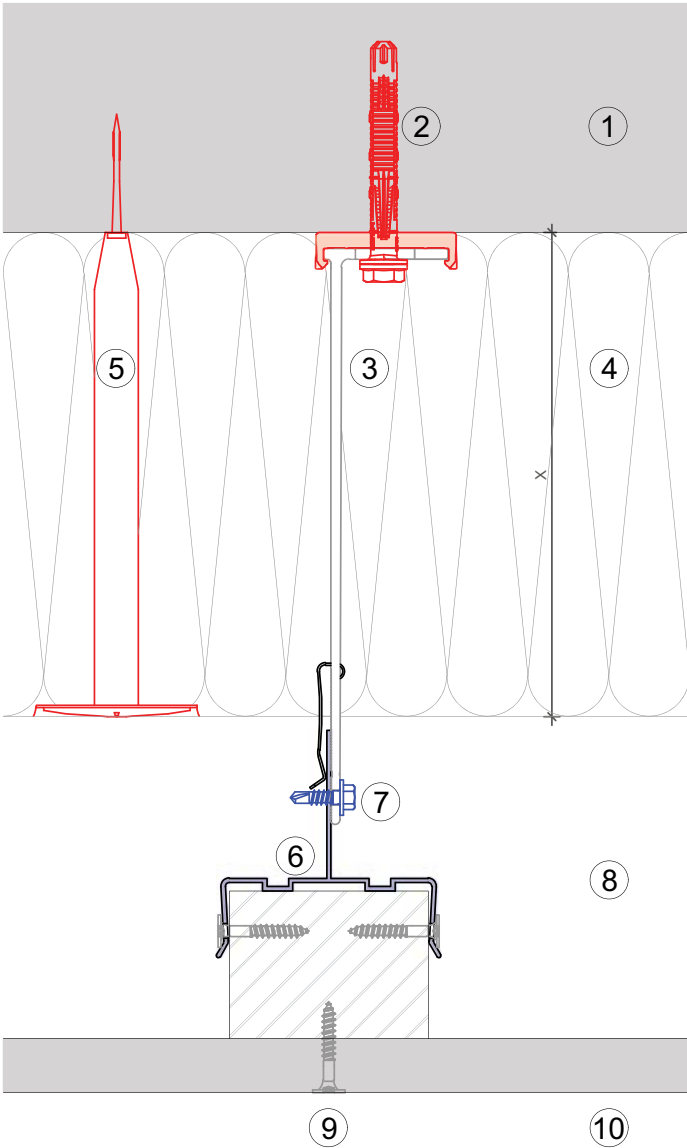
VIEW OF CLADDING



This is an interactive page! By clicking on a system part you get directed to the respective detail page.
Click on the move-back button to jump back to the CONTENT AND OVERVIEW.

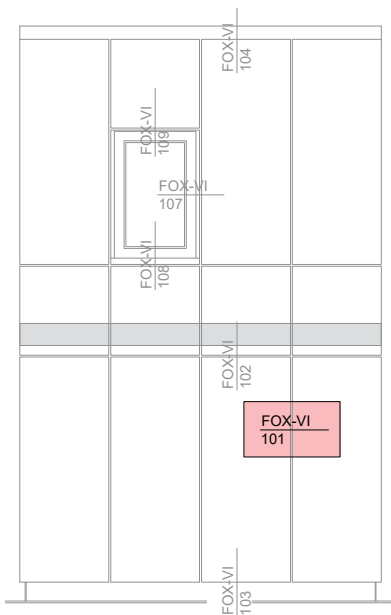


MFT-FOX VI 101



Legend:

- ① Base material
- ② Anchor acc. to static
- ③ Bracket and isolator MFT-FOX VI
- ④ Insulation
- ⑤ Fixing insulation
- ⑥ Mounting element MFT-UNI
- ⑦ Self drilling screw
- ⑧ Ventilation gap
- ⑨ Fixing cladding
- ⑩ Cladding

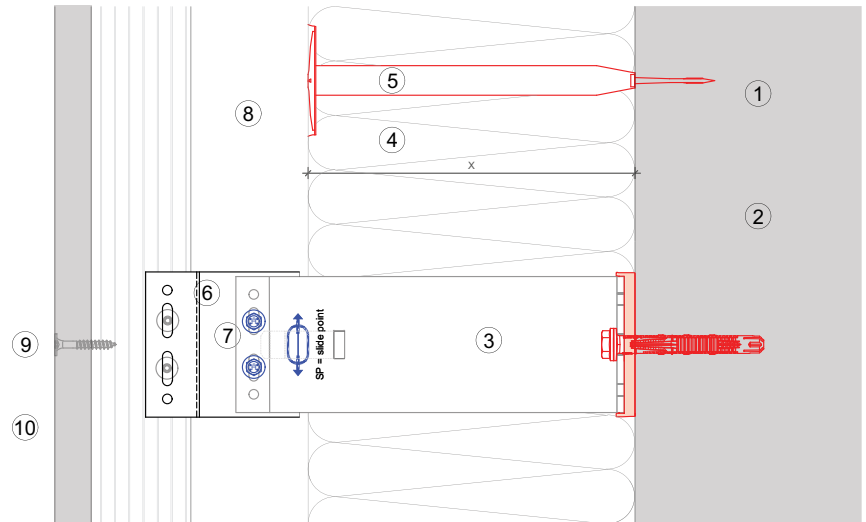


This is an interactive page! Click on the move-back button to jump back to the VIEW OF CLADDING.

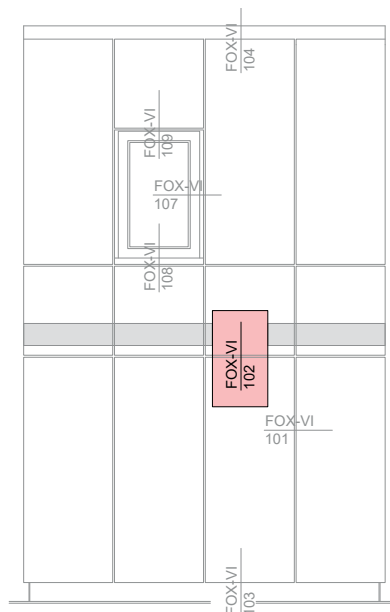
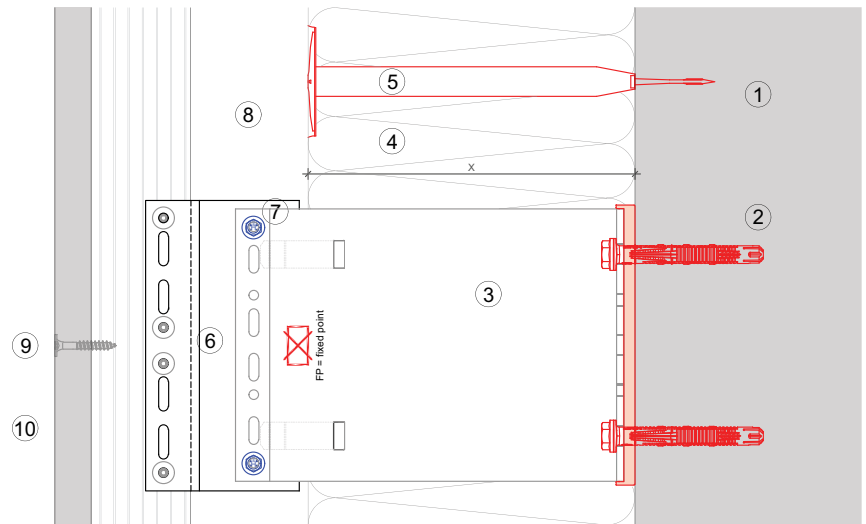
MFT-FOX VI 102

Legend:

- ① Base material
- ② Anchor acc. to static
- ③ Bracket and isolator MFT-FOX VI
- ④ Insulation
- ⑤ Fixing insulation
- ⑥ Mounting element MFT-UNI
- ⑦ Self drilling screw
- ⑧ Ventilation gap
- ⑨ Fixing cladding
- ⑩ Cladding



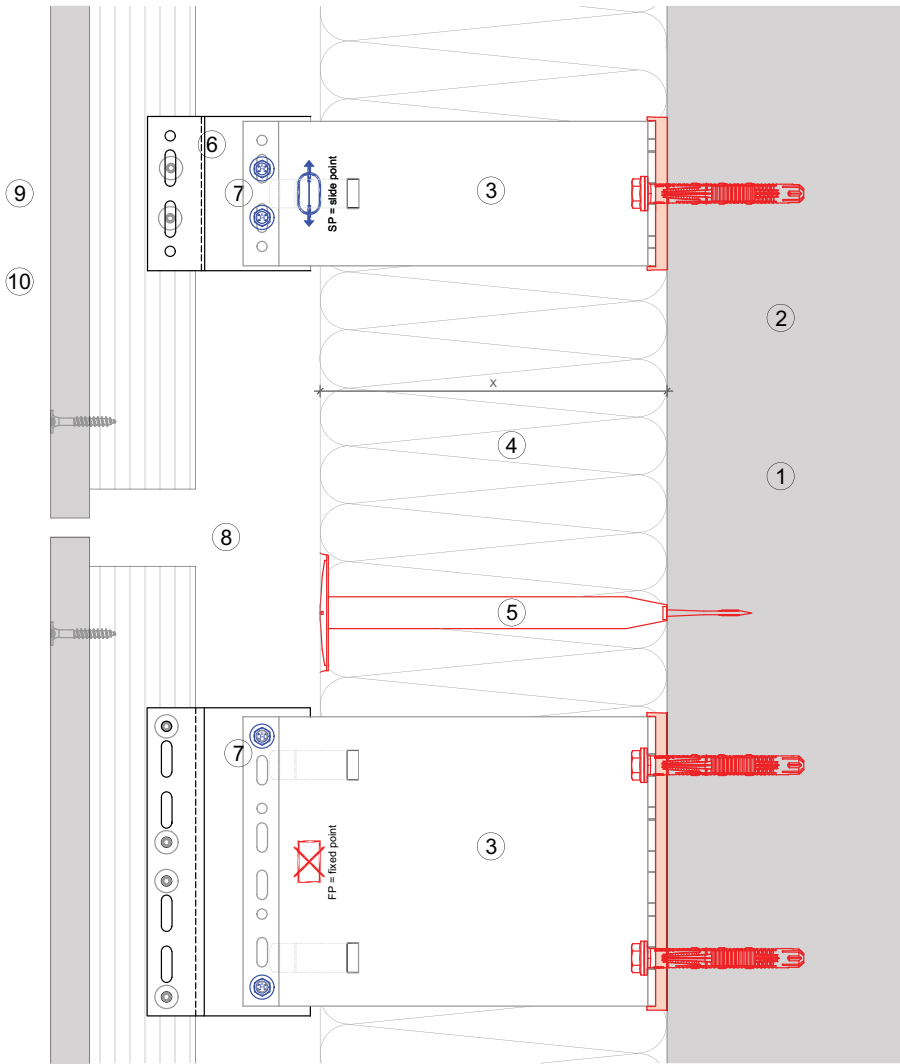
Vertical section-fixed point



This is an interactive page! Click on the move-back button to jump back to the VIEW OF CLADDING.

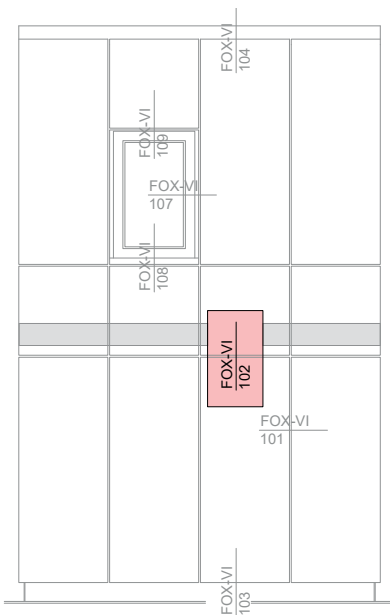


MFT-FOX VI 102



Legend:

- ① Base material
- ② Anchor acc. to static
- ③ Bracket and isolator MFT-FOX VI
- ④ Insulation
- ⑤ Fixing insulation
- ⑥ Mounting element MFT-UNI
- ⑦ Self drilling screw
- ⑧ Ventilation gap
- ⑨ Fixing cladding
- ⑩ Cladding

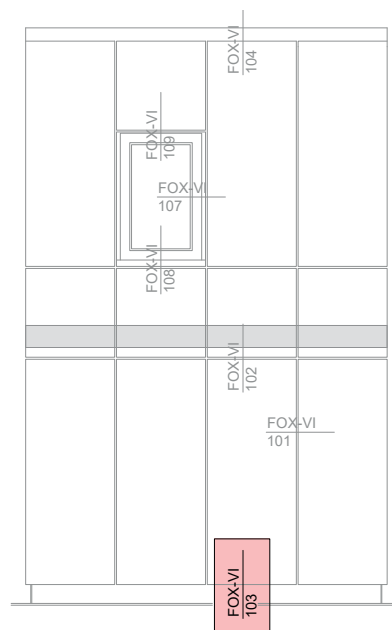
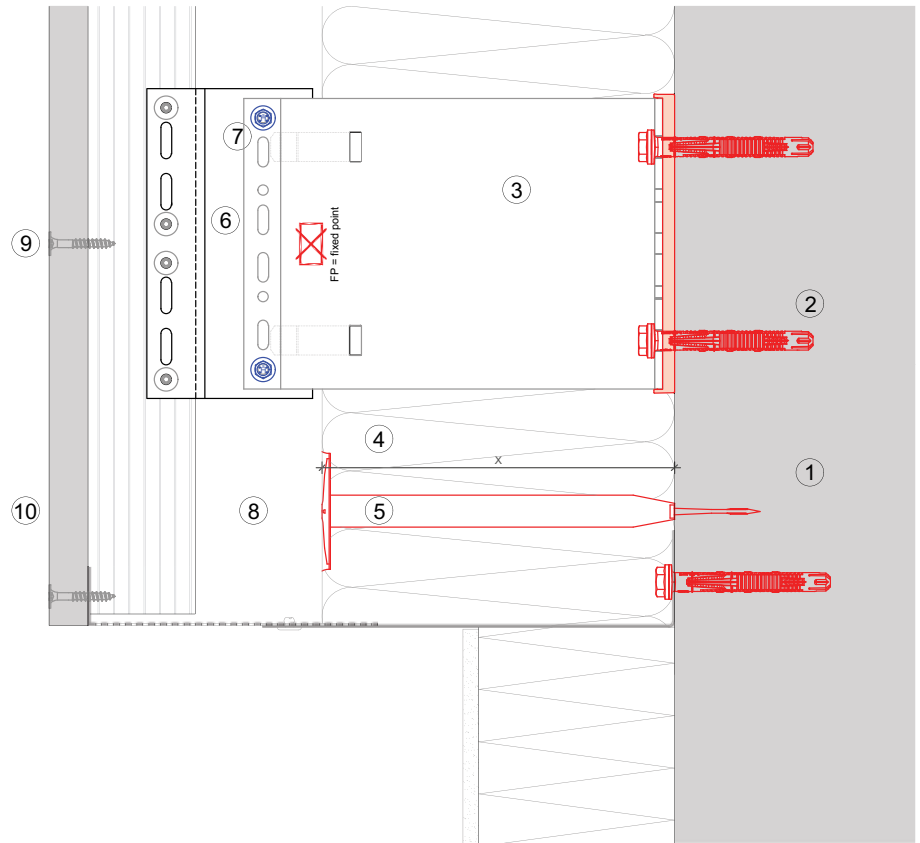


This is an interactive page! Click on the move-back button to jump back to the VIEW OF CLADDING.

MFT-FOX VI 103

Legend:

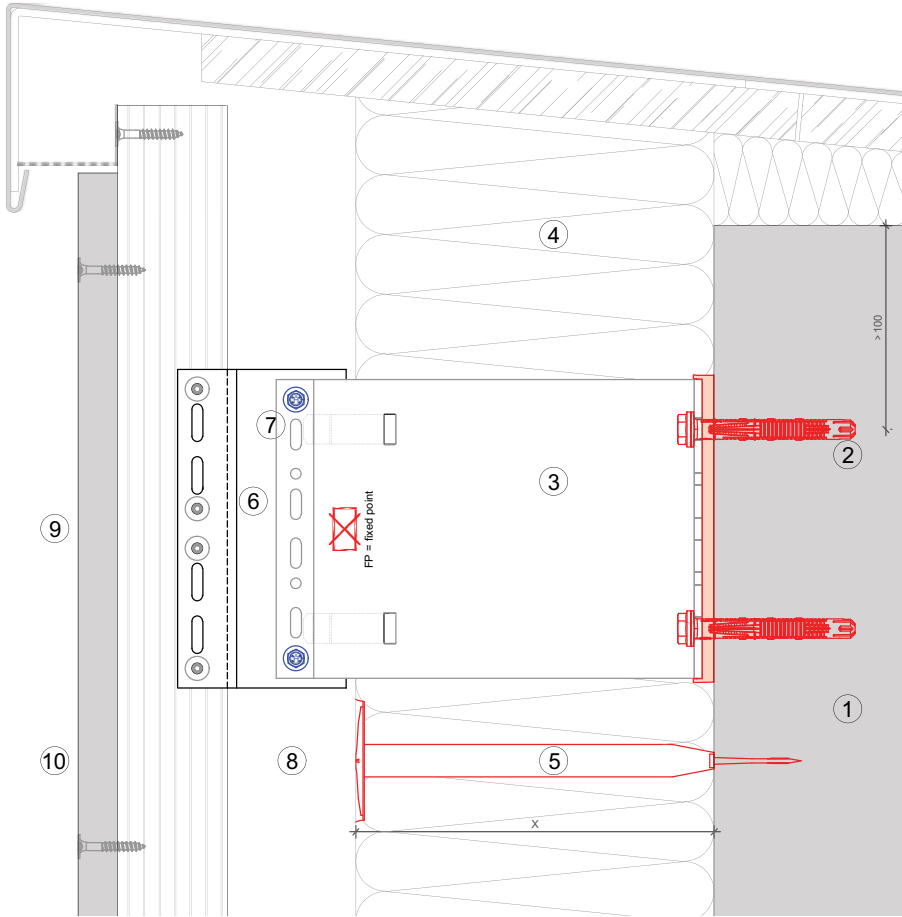
- ① Base material
- ② Anchor acc. to static
- ③ Bracket and isolator MFT-FOX VI
- ④ Insulation
- ⑤ Fixing insulation
- ⑥ Mounting element MFT-UNI
- ⑦ Self drilling screw
- ⑧ Ventilation gap
- ⑨ Fixing cladding
- ⑩ Cladding



This is an interactive page! Click on the move-back button to jump back to the VIEW OF CLADDING.

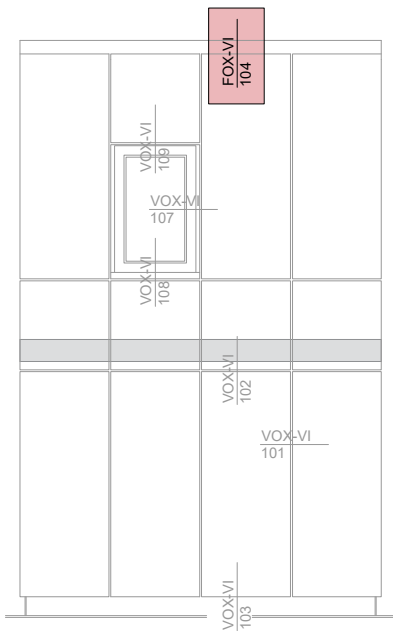


MFT-FOX VI 104



Legend:

- ① Base material
- ② Anchor acc. to static
- ③ Bracket and isolator MFT-FOX VI
- ④ Insulation
- ⑤ Fixing insulation
- ⑥ Mounting element MFT-UNI
- ⑦ Self drilling screw
- ⑧ Ventilation gap
- ⑨ Fixing cladding
- ⑩ Cladding

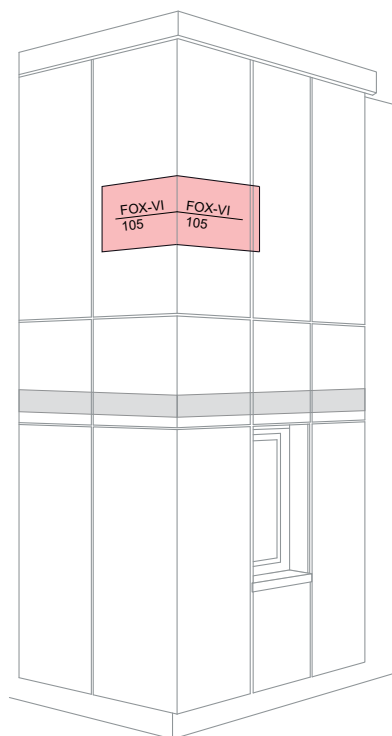
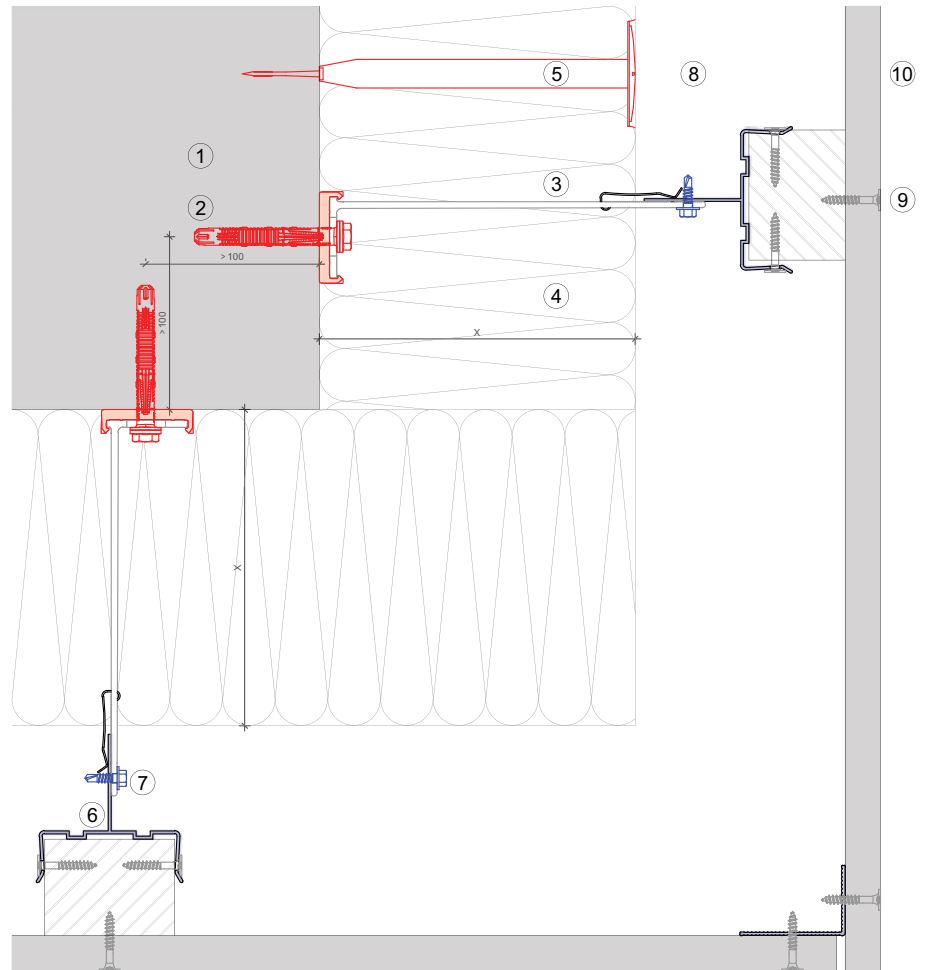


This is an interactive page! Click on the move-back button to jump back to the VIEW OF CLADDING.

MFT-FOX VI 105

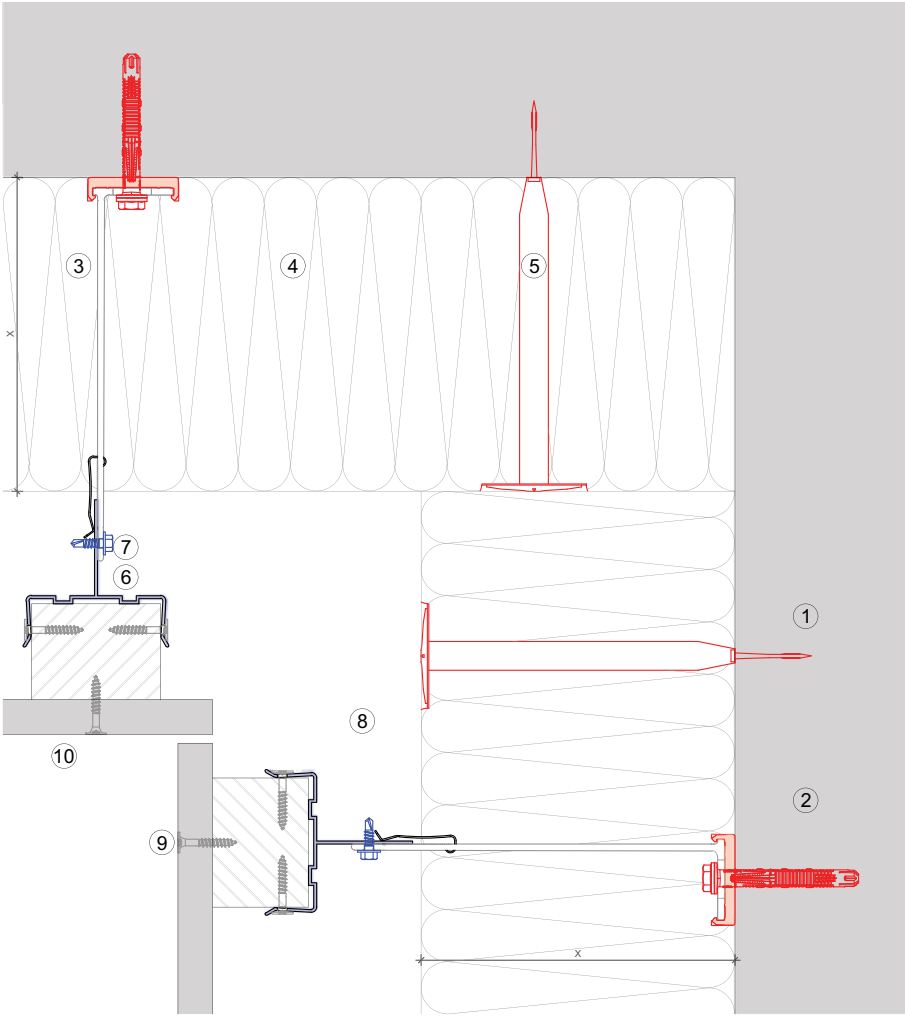
Legend:

- ① Base material
- ② Anchor acc. to static
- ③ Bracket and isolator MFT-FOX VI
- ④ Insulation
- ⑤ Fixing insulation
- ⑥ Mounting element MFT-UNI
- ⑦ Self drilling screw
- ⑧ Ventilation gap
- ⑨ Fixing cladding
- ⑩ Cladding



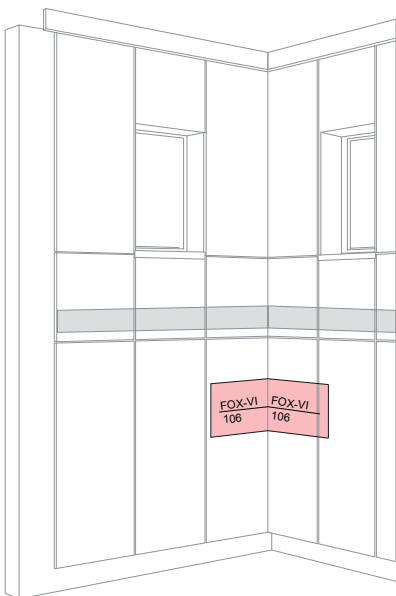
This is an interactive page! Click on the move-back button to jump back to the VIEW OF CLADDING.





Legend:

- ① Base material
- ② Anchor acc. to static
- ③ Bracket and isolator MFT-FOX VI
- ④ Insulation
- ⑤ Fixing insulation
- ⑥ Mounting element MFT-UNI
- ⑦ Self drilling screw
- ⑧ Ventilation gap
- ⑨ Fixing cladding
- ⑩ Cladding

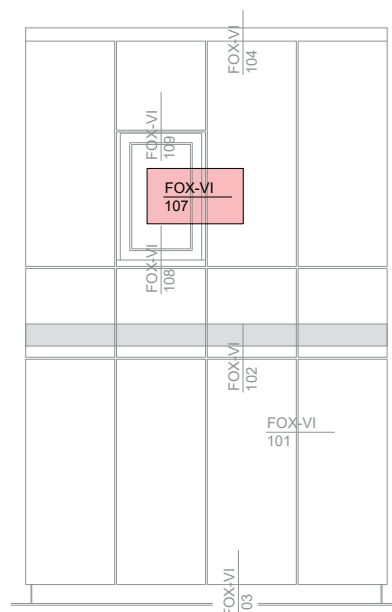
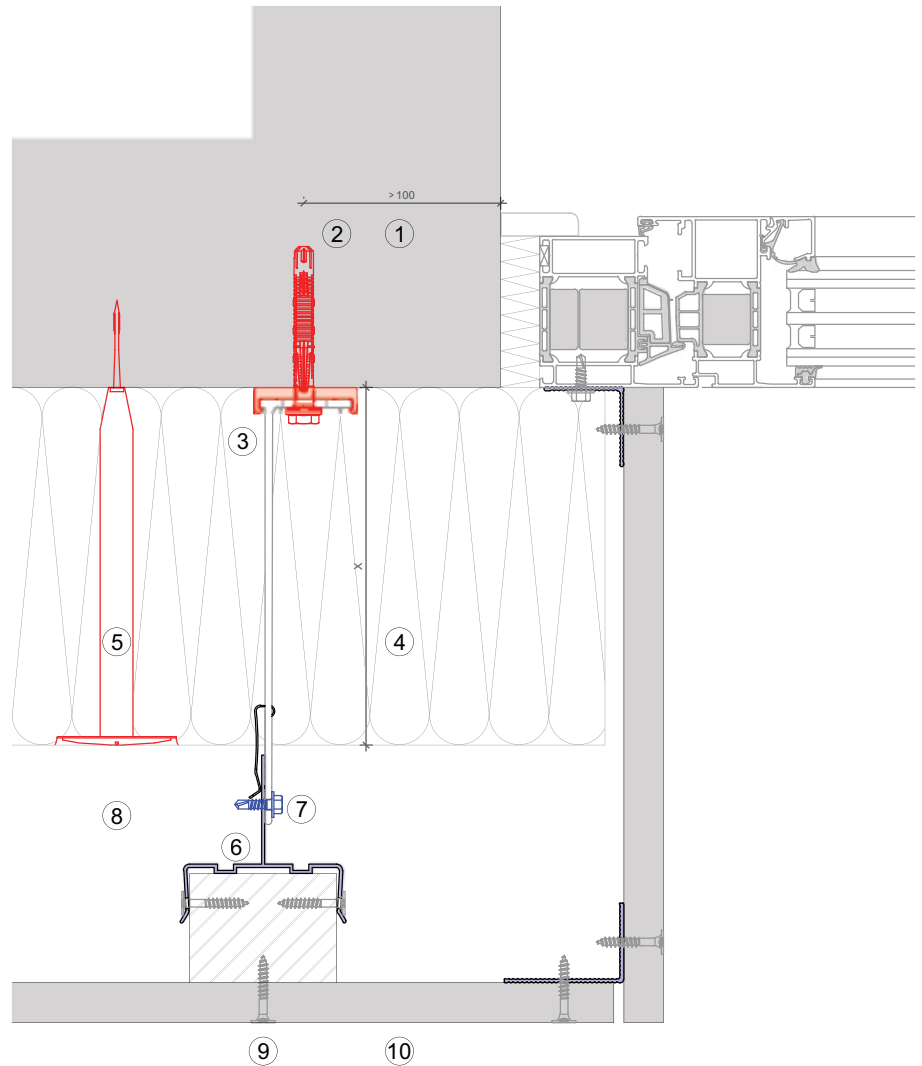


This is an interactive page! Click on the move-back button to jump back to the VIEW OF CLADDING.

MFT-FOX VI 107

Legend:

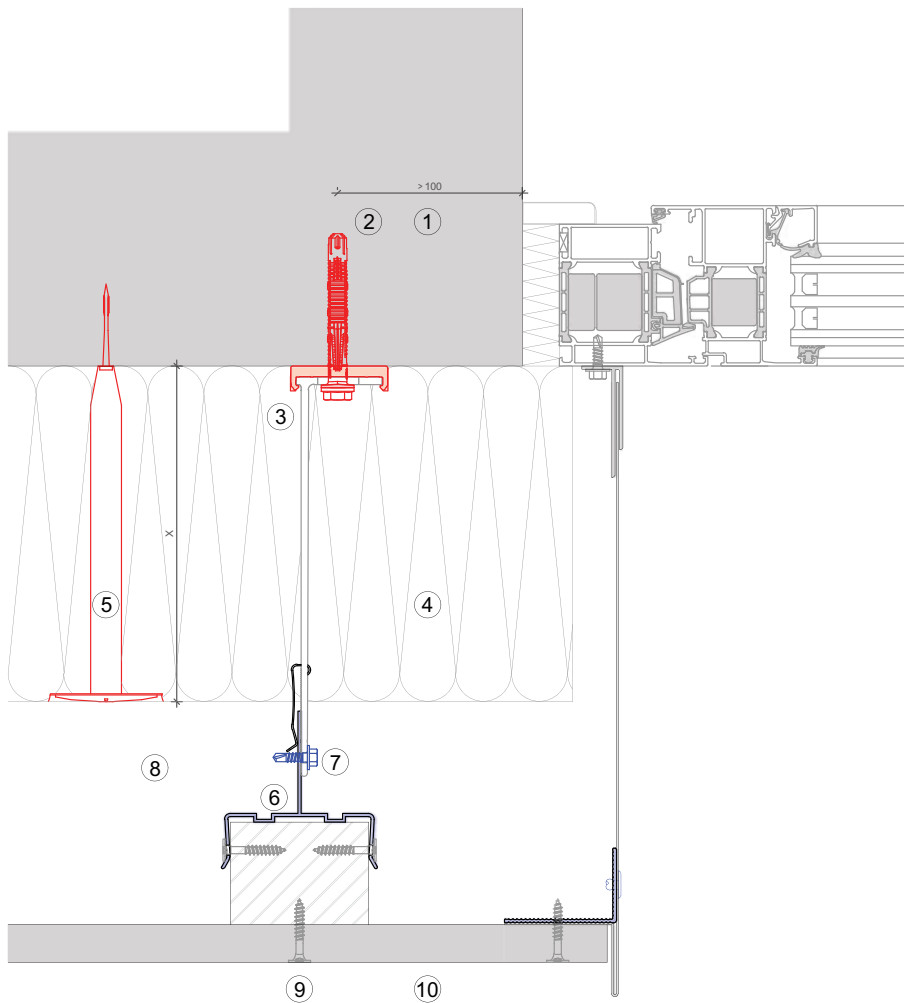
- ① Base material
- ② Anchor acc. to static
- ③ Bracket and isolator MFT-FOX VI
- ④ Insulation
- ⑤ Fixing insulation
- ⑥ Mounting element MFT-UNI
- ⑦ Self drilling screw
- ⑧ Ventilation gap
- ⑨ Fixing cladding
- ⑩ Cladding



This is an interactive page! Click on the move-back button to jump back to the VIEW OF CLADDING.

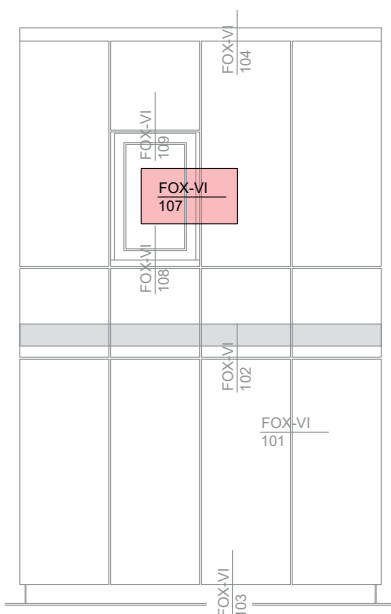


MFT-FOX VI 107



Legend:

- ① Base material
- ② Anchor acc. to static
- ③ Bracket and isolator MFT-FOX VI
- ④ Insulation
- ⑤ Fixing insulation
- ⑥ Mounting element MFT-UNI
- ⑦ Self drilling screw
- ⑧ Ventilation gap
- ⑨ Fixing cladding
- ⑩ Cladding

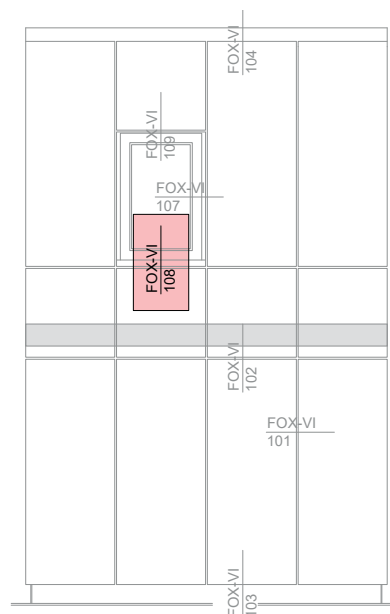
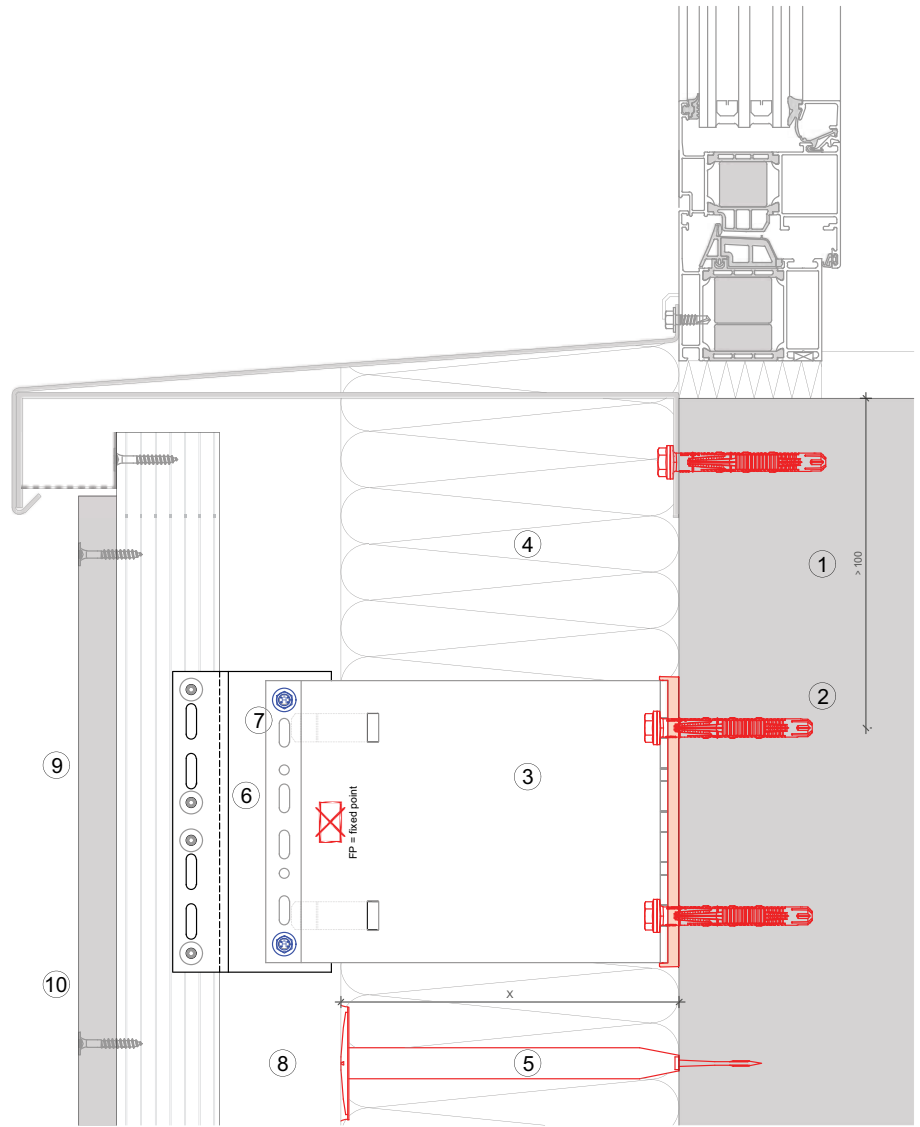


This is an interactive page! Click on the move-back button to jump back to the VIEW OF CLADDING.

MFT-FOX VI 108

Legend:

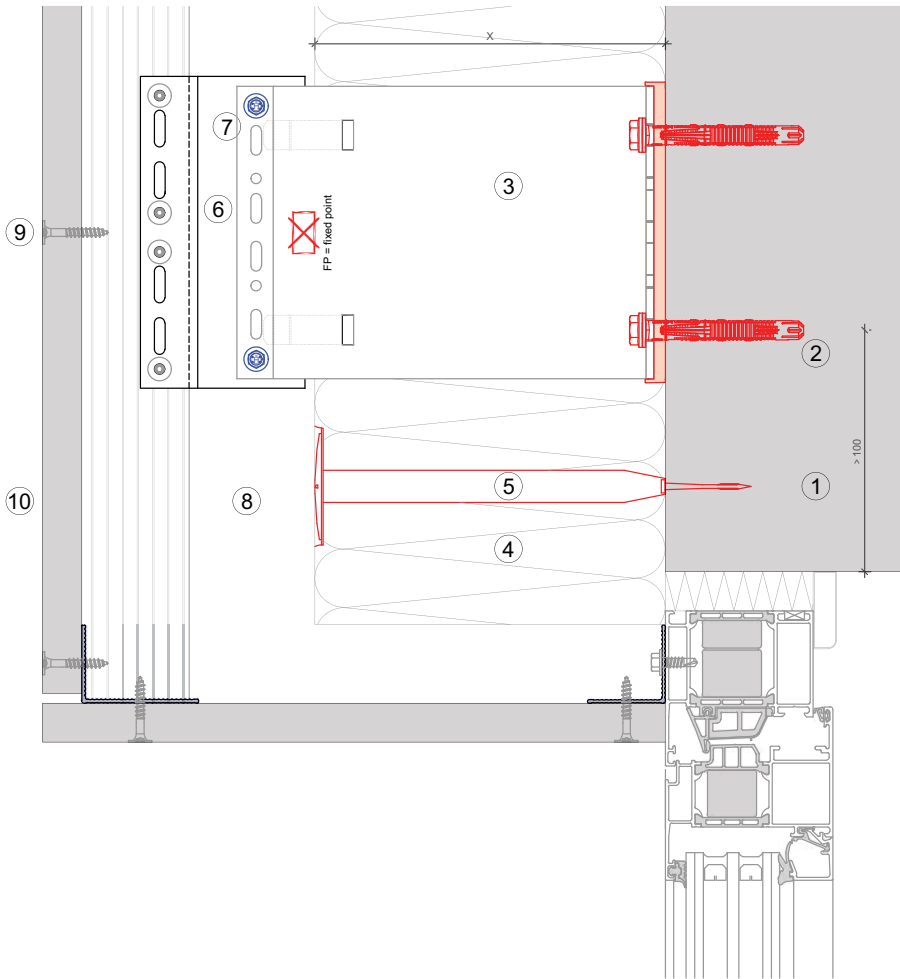
- ① Base material
- ② Anchor acc. to static
- ③ Bracket and isolator MFT-FOX VI
- ④ Insulation
- ⑤ Fixing insulation
- ⑥ Mounting element MFT-UNI
- ⑦ Self drilling screw
- ⑧ Ventilation gap
- ⑨ Fixing cladding
- ⑩ Cladding



This is an interactive page! Click on the move-back button to jump back to the VIEW OF CLADDING.

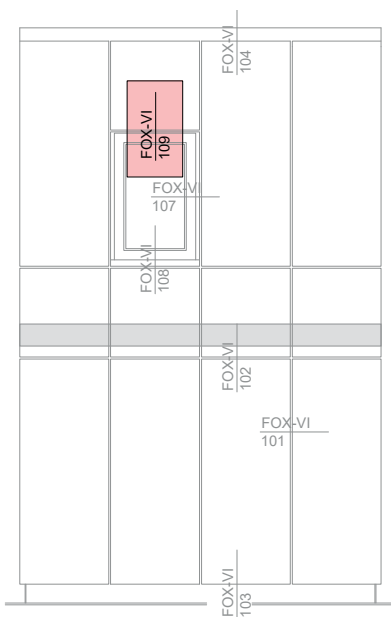


MFT-FOX VI 109



Legend:

- ① Base material
- ② Anchor acc. to static
- ③ Bracket and isolator MFT-FOX VI
- ④ Insulation
- ⑤ Fixing insulation
- ⑥ Mounting element MFT-UNI
- ⑦ Self drilling screw
- ⑧ Ventilation gap
- ⑨ Fixing cladding
- ⑩ Cladding

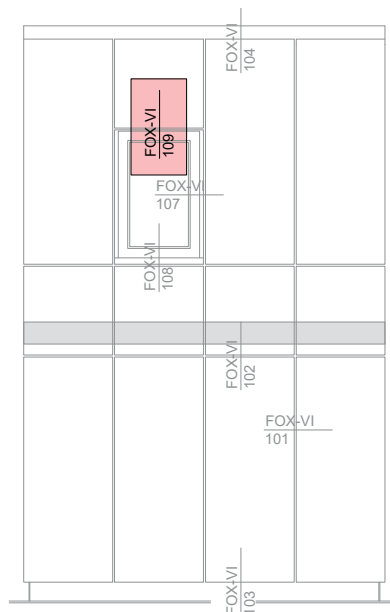
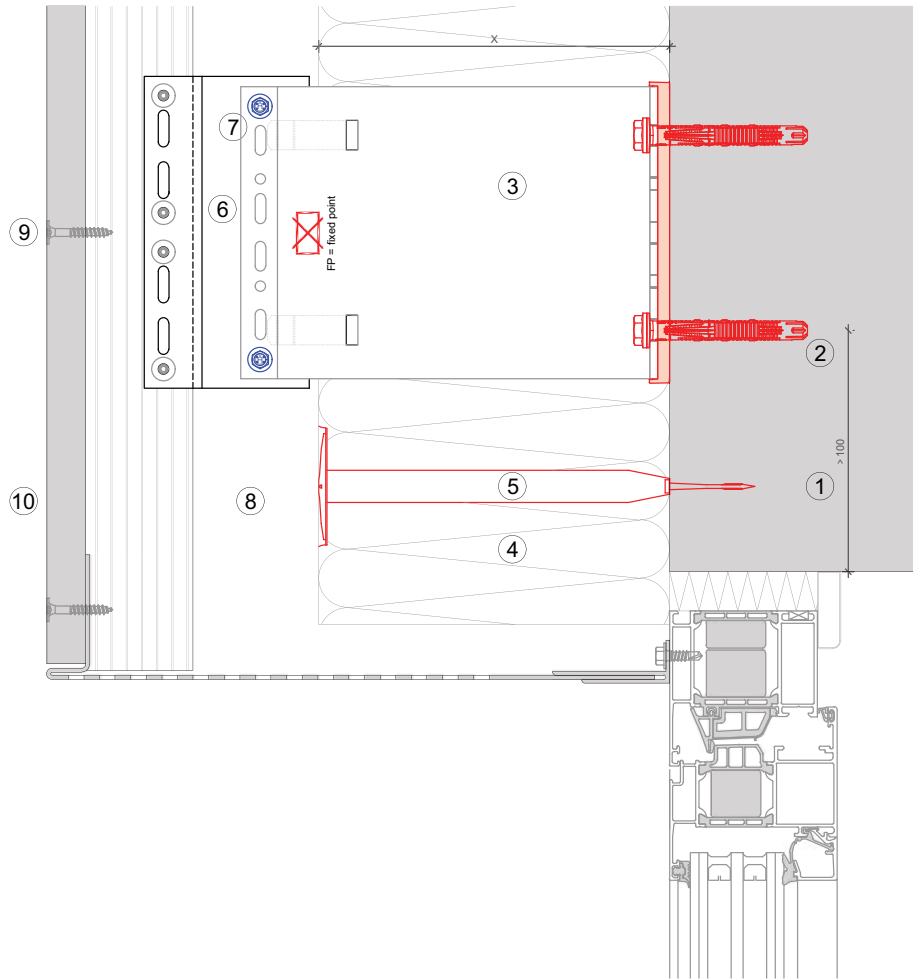


This is an interactive page! Click on the move-back button to jump back to the VIEW OF CLADDING.

MFT-FOX VI 109

Legend:

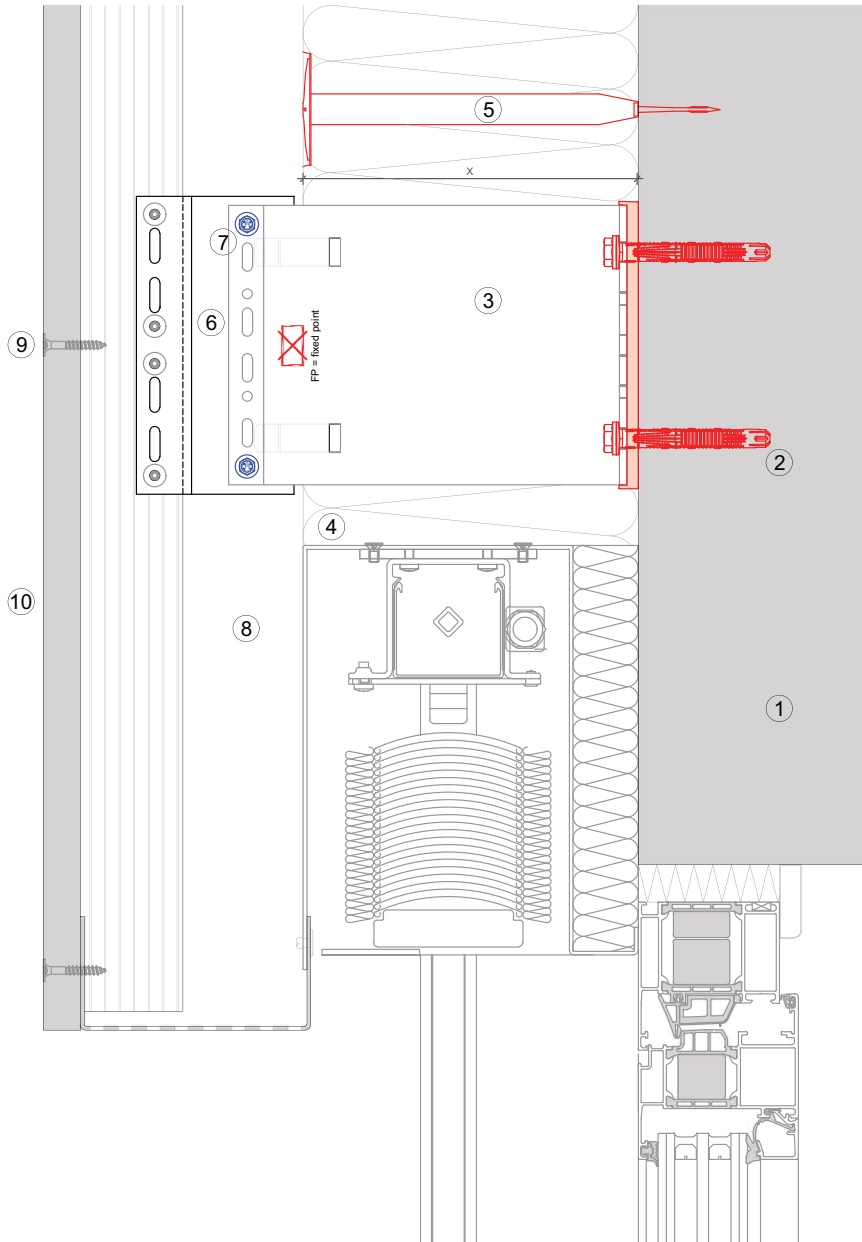
- ① Base material
- ② Anchor acc. to static
- ③ Bracket and isolator MFT-FOX VI
- ④ Insulation
- ⑤ Fixing insulation
- ⑥ Mounting element MFT-UNI
- ⑦ Self drilling screw
- ⑧ Ventilation gap
- ⑨ Fixing cladding
- ⑩ Cladding



This is an interactive page! Click on the move-back button to jump back to the VIEW OF CLADDING.

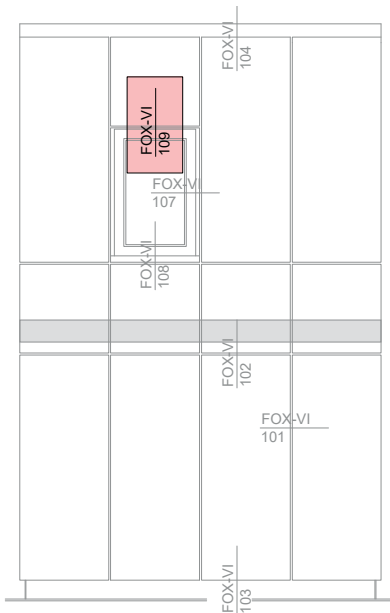


MFT-FOX VI 109



Legend:

- ① Base material
- ② Anchor acc. to static
- ③ Bracket and isolator MFT-FOX VI
- ④ Insulation
- ⑤ Fixing insulation
- ⑥ Mounting element MFT-UNI
- ⑦ Self drilling screw
- ⑧ Ventilation gap
- ⑨ Fixing cladding
- ⑩ Cladding



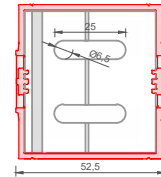
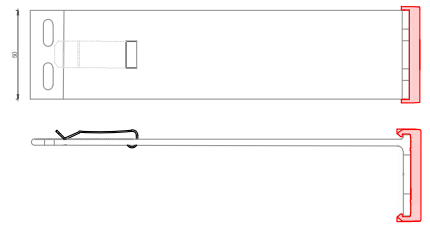
This is an interactive page! Click on the move-back button to jump back to the VIEW OF CLADDING.

BRACKETS RANGE

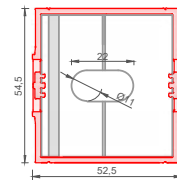
MFT-FOX VI Small

Order description	Item No.	Length
DIRECT FASTENING and SCREWS D=6,5 mm		
MFT-FOX VI 40 S 6.5	2305768	40 mm
MFT-FOX VI 60 S 6.5	2305769	60 mm
MFT-FOX VI 80 S 6.5	2305892	80 mm
MFT-FOX VI 100 S 6.5	2305893	100 mm
MFT-FOX VI 120 S 6.5	2305894	120 mm
MFT-FOX VI 140 S 6.5	2305895	140 mm
MFT-FOX VI 160 S 6.5	2305896	160 mm
MFT-FOX VI 180 S 6.5	2305891	180 mm
MFT-FOX VI 200 S 6.5	2305890	200 mm
MFT-FOX VI 220 S 6.5	2305889	220 mm
MFT-FOX VI 240 S 6.5	2305888	240 mm
MFT-FOX VI 260 S 6.5	2305887	260 mm
MFT-FOX VI 280 S 6.5	2305886	280 mm
MFT-FOX VI 300 S 6.5	2305885	300 mm
ANCHORS D=11 mm		
MFT-FOX VI 40 S 11	2305884	40 mm
MFT-FOX VI 60 S 11	2305883	60 mm
MFT-FOX VI 80 S 11	2305882	80 mm
MFT-FOX VI 100 S 11	2305881	100 mm
MFT-FOX VI 120 S 11	2305880	120 mm
MFT-FOX VI 140 S 11	2305897	140 mm
MFT-FOX VI 160 S 11	2305898	160 mm
MFT-FOX VI 180 S 11	2305899	180 mm
MFT-FOX VI 200 S 11	2305900	200 mm
MFT-FOX VI 220 S 11	2305901	220 mm
MFT-FOX VI 240 S 11	2305902	240 mm
MFT-FOX VI 260 S 11	2305903	260 mm
MFT-FOX VI 280 S 11	2305904	280 mm
MFT-FOX VI 300 S 11	2305905	300 mm

The length shown includes the isolator thickness.

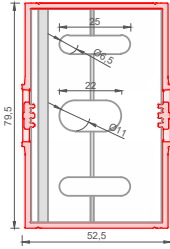
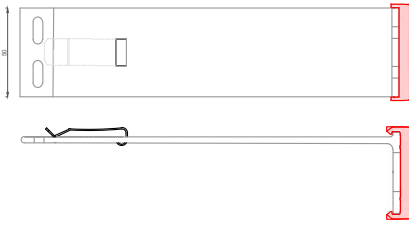


Direct fastening and Screws



Anchors

BRACKETS RANGE



Direct fastening
Screws and
Anchors

MFT-FOX VI Medium

Order description	Item No.	Length
DIRECT FASTENING, SCREWS D=6,5 mm and ANCHORS D=11 mm		
MFT-FOX VI 40 M 6.5 / 11	2305984	40 mm
MFT-FOX VI 60 M 6.5 / 11	2305983	60 mm
MFT-FOX VI 80 M 6.5 / 11	2305982	80 mm
MFT-FOX VI 100 M 6.5 / 11	2305981	100 mm
MFT-FOX VI 120 M 6.5 / 11	2305980	120 mm
MFT-FOX VI 140 M 6.5 / 11	2305979	140 mm
MFT-FOX VI 160 M 6.5 / 11	2305978	160 mm
MFT-FOX VI 180 M 6.5 / 11	2305977	180 mm
MFT-FOX VI 200 M 6.5 / 11	2305976	200 mm
MFT-FOX VI 220 M 6.5 / 11	2305975	220 mm
MFT-FOX VI 240 M 6.5 / 11	2305974	240 mm
MFT-FOX VI 260 M 6.5 / 11	2305973	260 mm
MFT-FOX VI 280 M 6.5 / 11	2305972	280 mm
MFT-FOX VI 300 M 6.5 / 11	2305971	300 mm

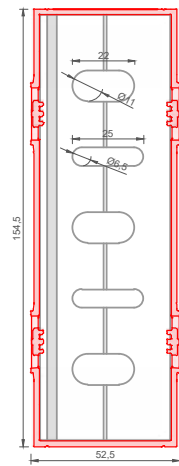
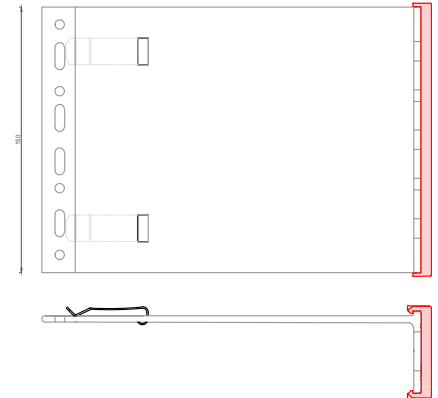
The length shown includes the isolator thickness.

BRACKETS RANGE

MFT-FOX VI Large

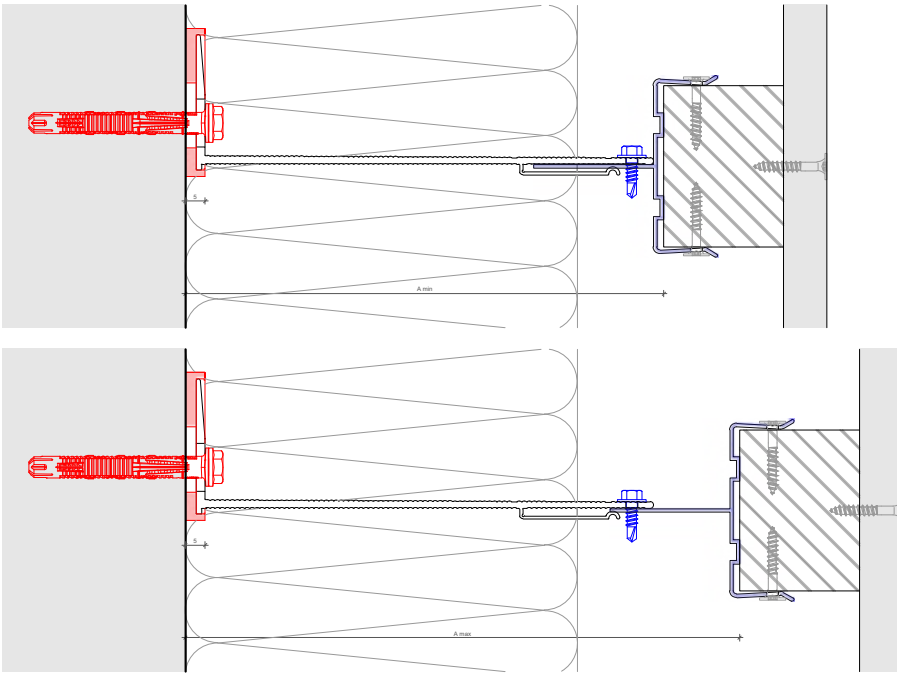
Order description	Item No.	Length
DIRECT FASTENING, SCREWS D=6,5 mm and ANCHORS D=11 mm		
MFT-FOX VI 40 L 6.5 / 11	2305950	40 mm
MFT-FOX VI 60 L 6.5 / 11	2305949	60 mm
MFT-FOX VI 80 L 6.5 / 11	2305948	80 mm
MFT-FOX VI 100 L 6.5 / 11	2305947	100 mm
MFT-FOX VI 120 L 6.5 / 11	2305946	120 mm
MFT-FOX VI 140 L 6.5 / 11	2305945	140 mm
MFT-FOX VI 160 L 6.5 / 11	2305944	160 mm
MFT-FOX VI 180 L 6.5 / 11	2305943	180 mm
MFT-FOX VI 200 L 6.5 / 11	2305942	200 mm
MFT-FOX VI 220 L 6.5 / 11	2305941	220 mm
MFT-FOX VI 240 L 6.5 / 11	2305940	240 mm
MFT-FOX VI 260 L 6.5 / 11	2305939	260 mm
MFT-FOX VI 280 L 6.5 / 11	2305938	280 mm
MFT-FOX VI 300 L 6.5 / 11	2305937	300 mm

The length shown includes the isolator thickness.



Direct fastening
Screws and
Anchors

BRACKET PROFILE ADJUSTMENT



Profiles	MFT-UNI wood	
	A min	A max
Brackets		
MFT-FOX VI 40 S/M/L 6,5/11	75.4	79.6
MFT-FOX VI 60 S/M/L 6,5/11	75.4	99.6
MFT-FOX VI 80 S/M/L 6,5/11	84.6	119.6
MFT-FOX VI 100 S/M/L 6,5/11	104.6	139.6
MFT-FOX VI 120 S/M/L 6,5/11	124.6	159.6
MFT-FOX VI 140 S/M/L 6,5/11	144.6	179.6
MFT-FOX VI 160 S/M/L 6,5/11	164.6	199.6
MFT-FOX VI 180 S/M/L 6,5/11	184.6	219.6
MFT-FOX VI 200 S/M/L 6,5/11	204.6	239.6
MFT-FOX VI 220 S/M/L 6,5/11	224.6	259.6
MFT-FOX VI 240 S/M/L 6,5/11	244.6	279.6
MFT-FOX VI 260 S/M/L 6,5/11	264.6	299.6
MFT-FOX VI 280 S/M/L 6,5/11	284.6	319.6
MFT-FOX VI 300 S/M/L 6,5/11	304.6	339.6

* Die angeführte Distanz ist valide für Profile mit 1,8 mm.



This is an interactive page! Click on the move-back button to jump back to the CONTENT AND OVERVIEW.

PRODUCTS RANGE

Bracket fastener

HUS-HR



HRD-H



HST-R



HSA-R



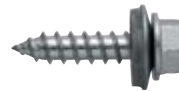
HIT-HY 270



HIT-HY 200-A



S-MP 53S



S-MD 51S / S-MD 53S / S-MD 55S



Direct fastening:

Powder-actuated tool



Universal nail X-CR P8



DX cartridge 6.8/11 M10



Brackets

MFT-FOX VI Small



MFT-FOX VI Medium



MFT-FOX VI Large



This is an interactive page! Click on the move-back button to jump back to the CONTENT AND OVERVIEW.

PRODUCTS RANGE

Profiles

MFT-L



MFT-UNI



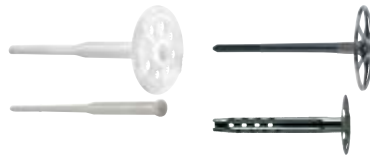
Profile to bracket fastener

S-AD



Insulation fasteners

Insulation fasteners





Hilti Corporation
9494 Schaan Liechtenstein
P +423-234 2111

www.facebook.com/hiltigroup
www.hilti.group